



JOHN DEERE

CONSTRUCTION EQUIPMENT

BACKHOES



MODEL NO.

315SG



G-SERIES



## OPERATOR STATION



# Wrap your eyes around the 315SG

Repositioned brake pedals provide more floor space, enhanced power-assist valve ensures low-effort braking.

Directional vents on both sides of the cab increase defrosting, heating, and cooling efficiency.

With nearly 30 percent more tinted glass, the 315SG's spacious walk-through cab has even more of what it takes to help your operators be their best. Forward visibility is virtually unobstructed. Repositioned ROPS posts, floor-to-ceiling glass doors, and an expansive curved windshield provide a panoramic view of the work ahead.

The view to the rear is just as revealing. Hinged side windows and a three-piece stacking rear window further open-up the jobsite around you.

It's not just operators of cab-equipped backhoes who benefit from G-Series advances. The forward placement of the operator station, restyled hood, narrow ROPS posts, underhood air cleaner, and shortened bucket cylinder all contribute to visibility that's clearly superior.

Getting to work has never been easier. Convenient handholds, large non-skid steps, and wide entryways welcome you aboard. And generous leg room and simultaneous slide-and-swing seat make it easy to turn your attention from loader to backhoe.



Work at night? Optional light package increases illumination by 400 percent; reduces glare from the exhaust, hood, and backhoe boom.

Park brake automatically engages whenever the engine stops. Effective on all four wheels (with MFWD), it also neutralizes the reverser, preventing brake drive-through.

Electronic monitor and optional gauges can be read at-a-glance from either operating position. Ignition, MFWD, ride control, and park brake switches and climate controls are all close-at-hand.

Conveniences include a coat hook, beverage holders, numerous headliner and side console storage compartments, and 12-volt power outlets.

Available full-suspension seat with flip-up armrests and front controls adjusts eight ways. Standard non-suspension seat features the same sculpted deep-cushioning and simultaneous slide and swing.





# Cover all the angles

Extendible dipperstick adds 3½ feet of digging depth and reach. Outer-box design grasps objects between the bucket and gripper teeth while retracting or extending.

Go ahead – place pipe, bust-up blacktop, or dig deep. With excavator-style boom, bucket, and hydraulics, the 3155G is more than up to the task.

Crowd power, swing torque, and boom and dipperstick lift are impressive. High-pressure hydraulics are powerful and quick. And easy-to-operate controls smoothly blend functions, enabling your operators to do their best.

The Power Curve™ boom's job-proved geometry provides smooth and consistent control throughout the entire digging arc. What's more, it provides additional reach both far and near. For better up-close visibility and less repositioning. Makes loading trucks easier, too.



## BACKHOE



Boom and dipperstick are box-constructed of high-strength steel for heavy-duty durability without excess weight. The boom's fork top and bottom and large pins also help extend component life.



Boom starts wide at the base and narrows through the line-of-sight for outstanding visibility.

Two-lever controls are standard, Case or Ford-style controls are available. Smooth response and low-effort are yours regardless of which you choose.



Available quick coupler lets you change buckets and attachments easily. Accommodates Deere D-, E-, and G-Series as well as other brands of buckets.



With 23 inches of side-shift to either side of center, you can work with ease around obstacles.

BACKHOES

CONSTRUCTION EQUIPMENT

LOADER



# Lift large, load easy

Boom is constructed of high-tensile steel for superior strength without excess weight. Continuous-curve box-section design eliminates the need for additional plating in the knee area.

Curved knee provides exceptional reach, enabling this backhoe to easily dump to the center of most trucks. Accommodates the 3155G's tall front tires, too.

Low-effort loader control has a thumb-activated transmission disconnect switch that diverts full engine power to the hydraulics for faster cycles.

Mechanical front-wheel drive provides extra power and traction to heap the bucket regardless of what's underfoot.



Available quick coupler lets you go from bucket to forks or other attachment with a flick of a switch.




Tight torque-converter match, impressive torque reserve, smooth combined-function metering, and optimum lift-to-crowd match make these aggressive and responsive loading tractors. Makes grading easier, too.

C-shape bucket backwall fills easily and resists packing. Long lip retains more material. Bolt-on cutting edge, full-length skid shoes, and built-in lift eyes are included.

Optional ride control functions as a shock absorber, smoothing out the ride with full bucket loads.



# It takes guts to build a backhoe this good



Deere-built 4.5-Liter turbocharged diesel packs an impressive torque reserve and delivers its rated power at a low 2,000 rpm.

Available limited-slip mechanical front-wheel-drive axle features a unique offset differential for superior ground clearance. Axle is totally sealed to keep out contaminants.

Positioned securely in the one-piece high-strength unitized frame, components are isolated from shock-load stress, yet can be removed individually to speed repair.

Planetary final drives distribute loads over three gears and are sealed in a cooling oil bath for long life and trouble-free performance.

Not all backhoes have what it takes to deliver a long-term commitment. Get to the heart of the matter and you'll discover the differences that make the 315SG your best choice.

From heavy-duty wet-sleeve Deere-built diesels to their inboard planetary final drives, these backhoes are loaded with traditional John Deere durability features.

Looking for a dependable co-worker and a smart long-term investment? Deere backhoes are manufactured to exacting quality standards in our ISO9001-certified North American factory. When you know how they're built, you'll choose a Deere.



**POWERTRAIN/COMPONENTS**

Hydraulic lines and hoses are routed internally or clamped securely so they're less likely to be damaged.

Open-center hydraulics blend good metering characteristics with low effort for smooth control. When it's not needed, the 315SG's tandem pump system unloads the second pump to maximize power and fuel.

Unitized mainframe eliminates troublesome pin-on backhoe joints for superior durability in this critical area.

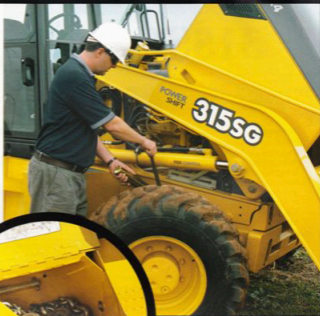
## SERVICE



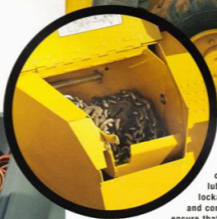
We sweat the details  
so you won't have to

Hood tilts forward for wide-open ground-level access to engine and transmission dipsticks and fill tubes, air filter pre-cleaner, engine coolant reservoir, and fuel filter.

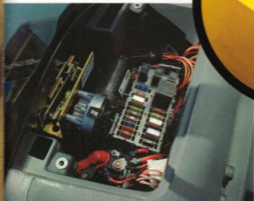
Daily service checks and fluid additions are all accomplished on the same side. Even periodic maintenance such as greasing the front axle pivot is easier, thanks to a remote lube bank.



Easy-access fuses and breakers, vertical spin-on filters, axle pivot grease bank – a long list of standard features help simplify service.



Toolbox portion of the battery compartment lets an operator take along tools, a grease gun, chains, or other items. Periodic lubrication chart beneath the lockable cover provides a quick and convenient reference to help ensure that nothing is overlooked.



Easy-tilt hood. Same-side ground-level daily servicing. Extended service intervals. The 315SG Backhoe is loaded with enhancements. Not even seemingly insignificant items escaped the scrutiny of product planners and engineers determined to make the G-Series Deere's best backhoes ever. We sweat the small stuff so your people will spend less time getting them ready for work. And more time getting work done.

# 3155G

BACKHOE LOADER

SPECIFICATIONS



## Engine

## 3155G

Type	John Deere PowerTech™ 4045T, turbocharged; meets North American EPA and CARB non-road diesel engine regulations effective January 1, 1997; also is certifiable to proposed E.U. (European Union) regulations, which are not yet effective
Rated power	92.5 SAE gross hp (69 kW) / 86 SAE net hp (64 kW) @ 2,300 rpm
Cylinders	4
Displacement	276 cu. in. (4,524 L)
Fuel consumption, typical	1.3 to 2.3 gal./hr. (4.9 to 8.7 L/h)
Torque rise	38 percent
Maximum net torque	277 lb.-ft. (376 Nm)
Lubrication	pressure system with spin-on filter and cooler
Air cleaner	dual stage dry type with safety element and precleaner
Electrical system	12 volt with 65-amp alternator
Sucker-type cooling fan	

## Transmission

Four-speed, helical cut gear, collar-shift transmission synchronized in all gears with hydraulic reverse

Torque converter, single stage, dual phase with 2.63:1 stall ratio

Travel speeds with 16.9-28 rear tires	Forward	Reverse
Gear 1	3.6 mph (5.8 km/h)	4.0 mph (6.4 km/h)
Powershift	3.6 mph (5.8 km/h)	4.0 mph (6.4 km/h)
Gear 2	5.9 mph (9.5 km/h)	6.6 mph (10.6 km/h)
Powershift	5.8 mph (9.3 km/h)	6.7 mph (10.8 km/h)
Gear 3	14.4 mph (23.2 km/h)	16.1 mph (25.9 km/h)
Powershift	13.9 mph (22.4 km/h)	16.6 mph (26.7 km/h)
Gear 4	20.5 mph (33.0 km/h)	20.5 mph (33.0 km/h)
Powershift	20.5 mph (33.0 km/h)	N/A

## Final Drives

Heavy-duty, inboard planetary final drives evenly distribute shock loads over three gears

## Brakes

Power-assisted, hydraulic wet disc, mounted inboard, self adjusting and self equalizing

## Capacities

Fuel tank (with ground level fueling)	36 gal. (136 L)
Engine coolant	17 qt. (16 L)
Engine oil including filter	9 qt. (8.5 L)
Torque converter and transmission	15 qt. (14 L)
Hydraulic system	24 gal. (91 L)
Rear axle	3.5 gal. (13 L)
Mechanical-front-wheel-drive axle	2.3 gal. (8.5 L)

## Steering

Hydrostatic power steering and emergency steering conform to ISO5010

Non-powered front axle (Carraro)

Curb turning radius with brakes	10 ft. 7 in. (3.23 m)
Without brakes	12 ft. 8 in. (3.86 m)
Bucket clearance circle with brakes	30 ft. 4 in. (9.25 m)
Without brakes	34 ft. 0 in. (10.36 m)
Steering wheel turns, lock to lock	
Non-powered axle	3.1
MFWD axle	3.0

Mechanical-front-wheel-drive

Curb turning radius with brakes	10 ft. 11 in. (3.34 m)
Without brakes	13 ft. 8 in. (4.17 m)
Bucket clearance circle with brakes	29 ft. 9 in. (9.07 m)
Without brakes	35 ft. 3 in. (10.74 m)
Steering wheel turns, stop to stop	2.5
Axle oscillations stop to stop, both axles	22 degrees

Axle ratings (SAE J43)

Front	18,860 lb. (8555 kg)
Rear	14,700 lb. (6670 kg)

## Hydraulic System

System	open center
Pressure	
Backhoe	3,625 psi (25,000 kPa)
Loader	3,625 psi (25,000 kPa)

**Hydraulic System (continued)****3155G**

Pump	gear type, tandem with unloader
Flow @ 2,200 rpm	
Backhoe	36 gpm (136 L/min)
Loader	28 gpm (106 L/min)
Filter, return oil	10-micron, spin-on enclosed replaceable element

**Cylinders**

	Bore	Stroke	Rod
Loader boom (2)	3.15 in. (80 mm)	31.1 in. (790 mm)	1.97 in. (50 mm)
Loader bucket (1)	3.15 in. (80 mm)	31.1 in. (790 mm)	1.77 in. (45 mm)
Backhoe boom (1)	4.72 in. (120 mm)	31.3 in. (795 mm)	2.20 in. (56 mm)
Backhoe crowd (1)	4.53 in. (115 mm)	23.9 in. (607 mm)	2.48 in. (63 mm)
Backhoe bucket (1)	3.54 in. (90 mm)	31.9 in. (810 mm)	2.20 in. (56 mm)
Backhoe swing (2)	3.54 in. (90 mm)	10.9 in. (278 mm)	1.97 in. (50 mm)
Backhoe extendable dipperstick (1)	2.76 in. (70 mm)	42.0 in. (1067 mm)	1.77 in. (45 mm)
Backhoe stabilizer (2)	2.76 in. (70 mm)	14.6 in. (370 mm)	1.77 in. (45 mm)
Steering (1) non-powered axle	2.56 in. (65 mm)	8.39 in. (213 mm)	1.42 in. (36 mm)
Steering (1) MPWD	2.56 in. (65 mm)	8.27 in. (210 mm)	1.42 in. (36 mm)

**Tires**

	Rear	Front
With non-powered front axle	16.9-24, 8 PR R4 16.9-28, 10 PR R4 19.5L-24, 8 PR R4	11L-15, 8 PR F3 11L-16, 12 PR F3 11L-16, 12 PR F3
With mechanical-front-wheel-drive	16.9-28, 10 PR R4 19.5L-24, 8 PR R4	12.5/80-18, 10 PR 12.5/80-18, 10 PR

**SAE Operating Weights**

Standard	14,700 lb. (6670 kg)
Cab adds	580 lb. (263 kg)
Mechanical-front-wheel-drive with tires adds	485 lb. (220 kg)
Extendable dipperstick excluding required counterweight adds	490 lb. (222 kg)
Optional 400-lb. counterweight adds	400 lb. (181 kg)
Optional 650-lb. counterweight adds	650 lb. (295 kg)
Optional 250-lb. bolt-on counterweight adds	250 lb. (113 kg)
Backhoe bucket coupler adds	138 lb. (63 kg)

See backhoe and loader performance data for bucket weights.

**Loader Buckets**

	Width	Heaped Capacity	Weight
Heavy-duty long lip	92 in. (2340 mm)	1.30 cu. yd. (1.00 m <sup>3</sup> )	1,050 lb. (476 kg)
Multipurpose	82 in. (2080 mm)	1.18 cu. yd. (0.91 m <sup>3</sup> )	1,664 lb. (755 kg)
	86 in. (2180 mm)	1.25 cu. yd. (0.96 m <sup>3</sup> )	1,713 lb. (777 kg)
	92 in. (2340 mm)	1.32 cu. yd. (1.01 m <sup>3</sup> )	1,800 lb. (816 kg)

Auxiliary cutting edge and skid shoes are standard on all buckets.

**Backhoe Performance**

	With Standard Backhoe*	With Extendable Dipperstick*	
		Retracted	Extended
Digging force, bucket cylinder	11,990 lb. (53.3 kN)	12,158 lb. (54.1 kN)	12,158 lb. (54.1 kN)
Digging force, crowd cylinder	8,090 lb. (36.0 kN)	7,796 lb. (34.7 kN)	5,628 lb. (25.0 kN)
Swing arc	180 degrees	180 degrees	180 degrees
Operator control	two levers	right foot treadle	right foot treadle
Bucket rotation	190 degrees	190 degrees	190 degrees
Leveling angle	8 degrees	8 degrees	8 degrees

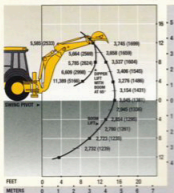
\*Backhoe specifications are with 24-in. x 7.5-cu. ft. (610 mm x 0.21 m<sup>3</sup>) bucket.

**Backhoe Buckets**

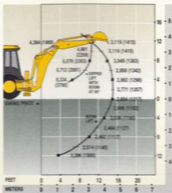
	Width	Capacity	Weight
Standard duty	24 in. (610 mm)	7.5 cu. ft. (0.21 m <sup>3</sup> )	350 lb. (159 kg)
Heavy duty with lift loop	12 in. (305 mm)	3.3 cu. ft. (0.09 m <sup>3</sup> )	295 lb. (134 kg)
	18 in. (457 mm)	5.1 cu. ft. (0.14 m <sup>3</sup> )	335 lb. (152 kg)
	24 in. (610 mm)	7.5 cu. ft. (0.21 m <sup>3</sup> )	400 lb. (181 kg)
	24 in. (610 mm)	8.8 cu. ft. (0.25 m <sup>3</sup> )	420 lb. (191 kg)
	30 in. (762 mm)	10.0 cu. ft. (0.28 m <sup>3</sup> )	445 lb. (202 kg)
	36 in. (914 mm)	12.5 cu. ft. (0.35 m <sup>3</sup> )	510 lb. (231 kg)
Severe duty with lift loop	18 in. (457 mm)	5.1 cu. ft. (0.14 m <sup>3</sup> )	362 lb. (164 kg)
	24 in. (610 mm)	7.5 cu. ft. (0.21 m <sup>3</sup> )	425 lb. (193 kg)
	24 in. (610 mm)	8.8 cu. ft. (0.25 m <sup>3</sup> )	455 lb. (206 kg)
	30 in. (762 mm)	10.0 cu. ft. (0.28 m <sup>3</sup> )	475 lb. (215 kg)
Ditch clearing	36 in. (914 mm)	12.5 cu. ft. (0.35 m <sup>3</sup> )	510 lb. (231 kg)

\*Lift capacities are over-end values in lb. (kg) according to SAE J31. Figures listed are 87% of the maximum lift force available. Base vehicle includes counterweight.

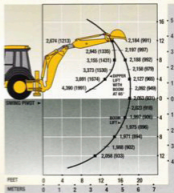
**3155G BACKHOE WITH  
STANDARD DIPPERSTICK**



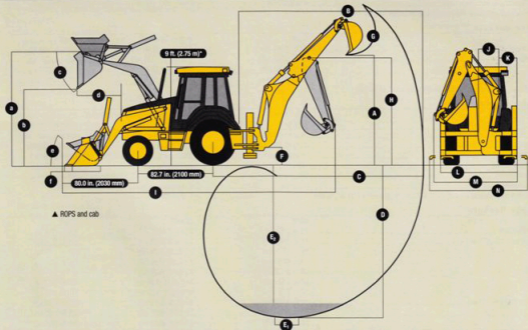
**3155G BACKHOE WITH 3-FT. 6-IN. (1.07 M)  
EXTENDABLE DIPPERSTICK, RETRACTED**



**3155G BACKHOE WITH 3-FT. 6-IN. (1.07 M)  
EXTENDABLE DIPPERSTICK, EXTENDED**



**DIMENSIONS** (SEE PAGE 15.)



## Backhoe

## 3155G

	With Standard Backhoe*	With Extendable Dipperstick*	
		Retracted	Extended
A Loading height, truck loading position	11 ft. 8 in. (3.56 m)	11 ft. 9 in. (3.58 m)	14 ft. 3 in. (4.34 m)
B Reach from center of swing pivot	18 ft. 1 in. (5.56 m)	18 ft. 5 in. (5.61 m)	21 ft. 9 in. (6.63 m)
C Reach from center of rear axle	22 ft. 8 in. (6.91 m)	22 ft. 7 in. (6.71 m)	26 ft. 4 in. (8.03 m)
D Maximum digging depth	14 ft. 1 in. (4.29 m)	14 ft. 7 in. (4.42 m)	18 ft. (5.49 m)
E Digging depth (SAE):			
(1) 2-ft. (610 mm) flat bottom	13 ft. 11 in. (4.24 m)	14 ft. 5 in. (4.40 m)	17 ft. 10 in. (5.44 m)
(2) 8-ft. (2440 mm) flat bottom	12 ft. 11 in. (3.94 m)	13 ft. 5 in. (4.09 m)	17 ft. 1 in. (5.21 m)
F Ground clearance, minimum	13.8 in. (350 mm)	13.8 in. (350 mm)	13.8 in. (350 mm)
G Bucket rotation	190 degrees	190 degrees	190 degrees
H Transport height	12 ft. (3.67 m)	11 ft. 11 in. (3.48 m)	11 ft. 11 in. (3.48 m)
I Overall length, transport	17 ft. 3 in. (5.26 m)	17 ft. 3 in. (5.26 m)	17 ft. 3 in. (5.26 m)
J Side-shift from tractor centerline	22.9 in. (582 mm)	22.9 in. (582 mm)	22.9 in. (582 mm)
K Wall to swing centerline	22.8 in. (580 mm)	22.8 in. (580 mm)	22.8 in. (580 mm)
L Stabilizer width – transport with ROPS	7 ft. 7 in. (2.32 m)	7 ft. 7 in. (2.32 m)	7 ft. 7 in. (2.32 m)
M Overall width (less loader bucket)	91 in. (2,32 m)	93 in. (2,36 m)	93 in. (2,36 m)
N Stabilizer overall width – operating	7 ft. 7 in. (2,32 m)	7 ft. 7 in. (2,32 m)	7 ft. 7 in. (2,32 m)

\*Backhoe specifications are with 24-in. x 7.5-cu. ft. (610 mm x 0.21 m<sup>3</sup>) bucket.

## Loader Performance with Bucket Options

	1.30-cu. yd. (1.00 m <sup>3</sup> ) Heavy-Duty Long Lip	1.78-cu. yd. (0.91 m <sup>3</sup> ) Multipurpose	1.29-cu. yd. (0.96 m <sup>3</sup> ) Multipurpose	1.32-cu. yd. (1.01 m <sup>3</sup> ) Multipurpose
Operator control	single lever	single lever	single lever	single lever
Breakout force	10,300 lb. (45.8 kN)	9,700 lb. (43.4 kN)	9,700 lb. (43.1 kN)	9,650 lb. (42.9 kN)
Lifting capacity, full height	7,200 lb. (3266 kg)	6,750 lb. (3061 kg)	6,700 lb. (3039 kg)	6,600 lb. (2993 kg)
a Height to bucket hinge pin, maximum	11 ft. 2 in. (3.40 m)	11 ft. 2 in. (3.40 m)	11 ft. 2 in. (3.40 m)	11 ft. 2 in. (3.40 m)
b Dump clearance, bucket at 45 degrees	8 ft. 8 in. (2.64 m)	8 ft. 7 in. (2.62 m)	8 ft. 7 in. (2.62 m)	8 ft. 7 in. (2.62 m)
c Bucket dump angle, maximum	45 degrees	45 degrees	45 degrees	45 degrees
d Reach at full height, bucket at 45 degrees	30.1 in. (765 mm)	32.2 in. (818 mm)	32.2 in. (818 mm)	32.2 in. (818 mm)
e Rollback angle at ground level	40 degrees	40 degrees	40 degrees	40 degrees
f Digging depth below ground, bucket level	8.1 in. (206 mm)	7.3 in. (185 mm)	7.3 in. (185 mm)	7.3 in. (185 mm)
Raising time to full height	4.9 sec.	4.9 sec.	4.9 sec.	4.9 sec.
Bucket dump time	1.1 sec.	1.1 sec.	1.1 sec.	1.1 sec.
Bucket lowering time (power down)	1.9 sec.	1.9 sec.	1.9 sec.	1.9 sec.

## Lift Capacity with Quick-Coupler/Forks

A <sup>1</sup> Maximum height	5,038 lb. (2287 kg)
B <sup>1</sup> Maximum reach	7,462 lb. (3388 kg)
C <sup>1</sup> At ground line	9,853 lb. (4473 kg)
D <sup>1</sup> Below ground line	4.4 in. (112.7 mm) to bottom of tire / 2.7 in. (68.3 mm) to top of tire



## 3155G Backhoe Loader

Key: ● Standard equipment ▲ Optional or special equipment

### Engine

- John Deere Model 4045T - 4.5 liter, B4 SAE net hp turbocharged, isolation mounted
- Vertical spin-on engine oil filter
- Vertical spin-on fuel filter with water separator
- Vertical spin-on secondary fuel filter
- Oil-to-water engine oil cooler
- Antifreeze, -34°F (-37°C)
- Coolant recovery tank
- Serpentine belt with automatic belt tensioner
- Sucker-type cooling fan
- Enclosed service fan guard
- ▲ High ambient temperature engine cooling
- ▲ Dual-element dry-type air cleaner
- Muffler, underhood with curved-and exhaust stack
- ▲ Chrome exhaust extension
- ▲ Electric ether starting aid
- ▲ Engine coolant heater, 1,000 watts

### Power Train

- Powershift transmission with torque converter: Four forward, three reverse speeds / Isolation mounted to mainframe
- ▲ Transmission with powershift reverser and torque converter: Fully synchronized four forward, four reverse speeds / Isolation mounted to mainframe
- Transmission oil cooler
- Vertical spin-on transmission filter
- Electric forward-neutral-reverse control lever with neutral safety switch interlock
- Electric clutch cutoff on gearshift and loader levers
- Differential lock, electric foot-actuated
- Planetary final drives
- Power-assisted hydraulic service brakes (conform to SAE J1473): Inboard, wet multi-disc, self adjusting and self equalizing
- Parking/emergency brake with electric switch control (conforms to SAE J1473): Spring applied, hydraulically released wet multi-disc / Independent of service brakes
- Hydrostatic power steering with emergency manual mode
- Non-powered front axle
- ▲ Mechanical-front-wheel-drive with limited-slip differential: Electric on/off control / Drive-shaft guard / Sealed axle
- 11L-16 F3 front tires
- ▲ 11L-16 F3 front tires
- 12.5/80-18 traction front tires
- 16.9-24 R4 rear tires
- 18.5L-24 R4 rear tires
- ▲ Rear wheel spacers for use with chains

### Backhoe

- Backhoe with standard dipperstick, 14-ft. 6-in. digging depth
- Two-lever (Deere) backhoe controls
- ▲ Three-lever (Case) backhoe controls
- ▲ Four-lever (Ford) backhoe controls
- SAE excavator two-lever backhoe controls
- Backhoe transport lock lever
- Swing lock pin stored in operator's station
- Stabilizer valve with two-direction anti-drift valves
- Pivoting stabilizers with dirt pads
- ▲ Pivoting stabilizers with reversible pads
- ▲ Extended stabilizers
- ▲ Stabilizer cylinder guards
- Less bucket, with bucket pins

### Backhoe (continued)

- ▲ Standard-duty backhoe bucket with lift loops
- ▲ Heavy-duty backhoe bucket with lift loops
- ▲ Severe-duty backhoe bucket with lift loops
- ▲ Backhoe coupler for "C," "D," "E," and "G" Series
- John Deere buckets, Case buckets, and Cat buckets
- ▲ Extendable dipperstick, 3-ft. 6-in. extension
- ▲ Auxiliary backhoe valve for swingers, thumbs, etc.
- ▲ Auxiliary backhoe valve for hammers, compactors
- ▲ Auxiliary backhoe plumbing for hammers, compactors
- ▲ Auxiliary backhoe plumbing for swingers, thumbs, etc.
- ▲ SAE-controlled load-lowering device valves
- ▲ Extended stabilizers

### Loader

- Hydraulic self leveling
- Return-to-dig feature
- Single-lever control with electric clutch cutoff switch
- Bucket-level indicator
- Loader boom service lock
- ▲ Ride control
- ▲ Auxiliary loader hydraulics with two-lever control
- ▲ Hydraulic coupler for buckets, forks, etc.
- Less bucket, with bucket pins
- ▲ Heavy-duty loader buckets with bolt-on cutting edges, skid plates, and lift loops
- ▲ Multipurpose loader buckets with bolt-on cutting edges, skid plates, and lift loops

### Hydraulic System

- 36-gpm (136 L/min.) tandem gear pump, open center system
- Independent hydraulic reservoir
- Swing-down hydraulic oil cooler
- "O"-ring face seal connectors
- 10-micron vertical spin-on filter

### Electrical

- 12-volt system
- 65-amp alternator
- Single battery with 190-min. reserve capacity and 850 CCA
- ▲ Dual batteries with 380-min. reserve capacity and 1,900 CCA
- Positive terminal battery cover
- Blade-type multi-fused circuits
- By-pass start safety cover on starter

### Lights

- Four halogen driving/work lights, 32,500 candlepower each (two front and two rear)
- ▲ Six additional halogen work lights, 32,500 candlepower each (two front, two rear, and two side)
- Two front and two rear turn signal/flashings
- Two rear stop and tail
- Two rear reflectors
- ▲ Rotating beacon
- ▲ Lift guards\*

### Operator's Station

- Modular-design ROPS/FOPS canopy with molded roof (conforms to SAE J1040): Isolation mounted
- Left and right access
- Slip-resistant steps and ergonomically located handholds
- Molded floor mat
- Headliner
- Coat hook
- 12-volt outlets (2)

\*See your John Deere dealer for further information.

### Operator's Station (continued)

- Built-in beverage holders
- Built-in Operator's Manual storage compartment with manual
- Interior rearview mirror
- ▲ Outside rearview mirrors
- Hand throttle with fuel-economy setting at 1,200 rpm
- ▲ Suspended foot throttle
- ▲ Tilt steering
- Horn
- Key start switch with electric fuel shutoff
- Engine coolant temperature gauge, illuminated electronic, with audible warning
- Oil temperature gauge, illuminated electronic, with audible warning
- Fuel gauge, illuminated electronic
- Digital display of engine hours, engine rpm, and system voltage
- Monitor system with audible and visual warnings: Engine air restriction indicator / Engine oil pressure indicator with audible warning / Hydraulic filter restriction indicator / Parking brake on/off indicator with audible warning / Seat belt indicator / Low brake pressure
- Non-suspension vinyl swivel seat without armrests
- ▲ Air suspension fabric swivel seat with armrests, lumbar support, and adjustable backrest
- Suspension vinyl swivel seat with armrests, lumbar support, and adjustable backrest
- ▲ Suspension fabric swivel seat with armrests, lumbar support, and adjustable backrest
- 2-in. seat belt with retractors
- ▲ 3-in. seat belt with retractors
- ▲ Cab: Headliner, dome light, left and right cab doors, tinted safety glass, one rear and one front windshield wiper, fresh air intake heater/defroster/pressurizer (40,000-Btu/hr. [11.7 kW] heater), and 65-amp alternator standard / Front windshield washer, air conditioning (26,000-Btu/hr. [7.6 kW] output and CFC-free R134a refrigerant), 95-amp alternator, and AM/FM/weatherband radio optional / 12-volt outlets (3)
- ▲ Quarter cab

### Overall Vehicle

- One-piece unitized construction mainframe
- Vehicle tiedowns, two front and one rear
- Remote grease bank for front axle
- Rigid-mounted front bumper
- ▲ 400-lb. (181 kg) front counterweight
- ▲ 650-lb. (295 kg) front counterweight
- ▲ 900-lb. (408 kg) front counterweight
- ▲ 1,150-lb. (522 kg) front counterweight
- ▲ 1,400-lb. (635 kg) front counterweight
- Fuel tank, 36 gal. (136 L), ground-level fueling
- Two-position easy-tilt hood
- ▲ Front grille screen
- Vandal protection for instrument panel, engine hood, toolbox, hydraulic reservoir, radiator, and fuel tank
- Reverse warning alarm: Switchable to 97 dB(A) or 111 dB(A)
- Dent-resistant full-coverage rear fenders
- ▲ Front fenders\*
- ▲ SMV emblem
- ▲ Rental decal kit
- ▲ Special color paint\*
- ▲ Bottom guard\*



Net engine power is with standard equipment including air cleaner, exhaust system, alternator, and cooling fan, at standard conditions per SAE J1349 and DIN 70 020, using No. 2-L fuel at 35 AP/gray. No derating is required up to 10,000-ft. (3,050 m). Gross power is without cooling fan.

Specifications and design subject to change without notice. Wherever applicable, specifications are in accordance with SAE standards. Except where otherwise noted, these specifications are based on a unit with 16.9-28, 8 PR R4 rear tires: 11L-16, 12 PR F3 front tires; 1.30-cu. yd. (1.00 m<sup>3</sup>) loader bucket; and 24-in. x 7.5-cu. ft. (610 mm x 0.21 m<sup>3</sup>) backhoe bucket.

