

L O A D E R

# 544G TC





#### ■ COUPLE AND RELEASE ATTACHMENTS FROM YOUR SEAT

With the John Deere quick-coupler, you can couple and release attachments without leaving the comfort of your cab. An electronic rocker switch controls the release pins. The parallel-lift loader-boom linkage design allows a clear view to the coupler.



#### ■ EASY-ACCESS SERVICING

The 544G's wide-open articulation area provides easy access to the transmission dipstick, steering-cylinder tube points, and articulation pivots. Frame hinge pivots feature double tapered roller bearings that need to be lubricated only every 1,000 hours.



#### ■ INBOARD PLANETARY FINAL DRIVES

Heavy-duty, planetary final drive gears are mounted inboard, where size isn't restricted by wheel diameter. They distribute axle shock loads evenly over three gears, and run in a cooling oil bath for long life and trouble-free service.

#### ■ SHIFT UP OR DOWN AT THE TOUCH OF A BUTTON

In gears 1 through 3, the quick-shift button lets you upshift and downshift without touching the shift lever. Click once to shift down one gear, click again to shift back up. In 4th gear the transmission shifts automatically between 2nd, 3rd, and 4th speeds.



#### ■ FEATHER-SMOOTH STEERING, ALL-DAY COMFORT

Steering on the 544G TC is 50 percent smoother than on earlier models, and requires 25 percent less operator effort. High-torque cylinder geometry permits full power steering at all speeds through the 80-degree steering arc (40 degrees each direction).

The eight-way-adjustable suspension seat includes a two-inch retractable seat belt. The tilt steering column is also fully adjustable. On machines equipped with enclosed cabs, pressurizer and heater are standard equipment. The microprocessor-controlled monitoring system keeps a close eye on 15 critical systems, with warnings that are both audible and visible.





#### ■ PARK BRAKE AUTOMATICALLY ENGAGES

You'll never forget to set the park brake again: It automatically engages when you shut off the engine with the ignition key. When the brake is set, the transmission is neutralized – a safeguard against damage that might result from driving with the brake engaged.



#### ■ LOW-EFFORT SHIFTING

Located right on the steering column, the single-lever, electric-shift transmission control lets you change gears with a quick twist of the wrist. Changing direction is effortless as well – just move the lever up or down.



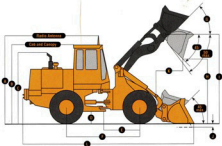
<b>ENGINE</b>		<b>SAAB 910</b>
Type	John Deere 6059T with altitude-compensating turbocharger	
Rated power	120 SAE net hp (90 kW), 125 SAE gross hp (94 kW) @ 2,200 rpm	
Cylinders	6	
Displacement	359 cu. in. (5.884 L)	
Maximum net torque	388 lb.-ft. (527 Nm) @ 1,400 rpm	
Lubrication	pressure system with full-flow spin-on filter and cooler	
Fuel consumption, typical	2.0 to 4.0 gal./hr. (7.6 to 15.2 L/h)	
Cooling fan	blower	
Electrical system	12 volt with 95-amp alternator	
Battery (one 12 volt)	reserve capacity: 160 min., 625 CCA	
Air cleaner	dual safety element dry type; restriction indicator for service	
<b>TRANSMISSION</b>		
Type	torque converter - power shift	
Controls	low-effort electronically controlled automatic shift and quick-shift button	
Travel speeds*	Forward Reverse	
Gear 1	4.6 mph (7.4 km/h)	4.6 mph (7.4 km/h)
Gear 2	7.7 mph (12.3 km/h)	7.7 mph (12.3 km/h)
Gear 3	16.9 mph (27.2 km/h)	16.9 mph (27.2 km/h)
Gear 4	23.8 mph (38.4 km/h)	
*Equipped with 20.5-25 tires.		
<b>AXLES/BRAKES</b>		
Final drives	heavy-duty planetary, mounted inboard	
Differentials (choice of)	conventional front and rear - Standard; hydraulic lock front, conventional rear - Optional; No/SPN front, conventional rear - Optional; hydraulic lock front and rear - Optional; front axle disconnect - Optional	
Rear axle oscillation	22 degrees, stop to stop	
Maximum rise and fall, single wheel	28.6 in. (727 mm)	
Brakes (conform to SAE J1473, ISO3450)		
Service brakes	inboard-mounted hydraulic wet disc, bathed in cooling oil, long life self-adjusting	
Parking brake	automatically spring applied, hydraulically released, disc and caliper type, attached to transmission output shaft	
<b>HYDRAULIC SYSTEM/STEERING</b>		
Pump (loader and steering)	gear-type, open-center system	
Maximum flow	46.3 gpm (175 L/m) @ 600 psi (41.37 kPa) and 2,200 rpm	
Pressure	loader relief 2,750 psi (18 963 kPa) steering relief 2,650 psi (18 270 kPa)	
Loader controls	two-function valve with single or double levers and control lever lockout optional three-function valve with auxiliary lever	
Hydraulic cycle times		
Rate	5.8 sec.	
Dump	1.9 sec.	
Lower	3.2 sec. (float down) / 3.9 sec. (power down)	
Maximum lift capacity	with 2.25 cu. yd. (1.7 m <sup>3</sup> ) excavating bucket	
Lift at ground level	20,035 lb. (9086 kg)	
Lift at maximum height	11,365 lb. (5154 kg)	
Steering (conforms to SAE J1511)		
Type	power, fully hydraulic	
Relief valve setting	2,650 psi (18 270 kPa)	
Articulation angle	80-degree arc (40 degrees each direction)	
Turning radius (measured to centerline of outside tire)	16 ft. 3 in. (4.95 m)	
<b>TIRES</b>		
Choice of	15.5-25, 12 PR L2 / 17.5-25, 12 PR L2 / 17.5-25, 12 PR L3 / 20.5-25, 12 PR L2 / 20.5-25, 12 PR L3 / 20.5-25, 16 PR L3 / 17.5-25, Radial, One Star L2 equivalent / 17.5-25, Radial, One Star L3 equivalent / 20.5-25, Radial, One Star L2 equivalent	
Tires	15.5-25 17.5-25 20.5-25	
Tread width	76.38 in. (1940 mm)	74.80 in. (1900 mm)
Width over tires	93.11 in. (2365 mm)	96.93 in. (2462 mm)
Change in vertical height	- 1.57 in. (- 40 mm)	2.60 in. (66 mm)
Change in reach	1.38 in. (35 mm)	0 - 2.83 in. (- 72 mm)
<b>CAPACITIES</b>		
Fuel tank with ground level fueling	57.6 gal. (218 L)	
Cooling system	25 qt. (24 L)	
Engine lubrication, including full-flow spin-on filter	20 qt. (19 L)	
Power shift transmission, including vertical cartridge filter	10 qt. (9.5 L)	
Differentials		
Front	20 qt. (19 L)	
Rear	20 qt. (19 L)	
Loader hydraulic reservoir	80 qt. (76 L)	

## DIMENSIONS WITH BUCKET AND COUPLER

5445 TC

1 Overall height	11 ft. 5.3 in. (3.49 m)
2 Height to top of cab and canopy	10 ft. 4.8 in. (3.17 m)
3 Height to top of exhaust	9 ft. 2 in. (2.79 m)
4 Ground clearance	14.7 in. (373 mm)
5 Length from centerline of front axle	57 in. (1450 mm)
6 Wheelbase	114 in. (2900 mm)
7 Maximum bucket angle	46.6 degrees
8 Dump height	▲
9 Height to hinge pin, fully raised	12 ft. 3.7 in. (3.75 m)
10 Digging depth	4 in. (101 mm)
11 Reach, bucket fully raised	▲
12 Overall length	▲

▲ See Bucket Information below.



## BUCKET INFORMATION

Bucket Type/Size	Stockpiling w/Boh-on-Edge	Stockpiling w/o Boh-on-Edge	General Purpose w/Boh-on-Edge	General Purpose w/o Boh-on-Edge	Excavating w/Boh-on-Edge	Excavating w/o Boh-on-Edge
Capacity, heaped SAE	2.88 cu. yd. (2.2 m <sup>3</sup> )	2.75 cu. yd. (2.1 m <sup>3</sup> )	2.63 cu. yd. (2.0 m <sup>3</sup> )	2.50 cu. yd. (1.9 m <sup>3</sup> )	2.50 cu. yd. (1.9 m <sup>3</sup> )	2.25 cu. yd. (1.7 m <sup>3</sup> )
Capacity, struck SAE	2.64 cu. yd. (2.00 m <sup>3</sup> )	2.50 cu. yd. (1.90 m <sup>3</sup> )	2.43 cu. yd. (1.85 m <sup>3</sup> )	2.30 cu. yd. (1.76 m <sup>3</sup> )	2.23 cu. yd. (1.70 m <sup>3</sup> )	2.10 cu. yd. (1.60 m <sup>3</sup> )
Bucket width	100.5 in. (2.55 m)	100.5 in. (2.55 m)	100.5 in. (2.55 m)	100.5 in. (2.55 m)	100.5 in. (2.55 m)	100.5 in. (2.55 m)
Breakout force, SAE J732C	18,519 lb. (82.4 kN)	19,588 lb. (87.1 kN)	19,500 lb. (87.1 kN)	20,787 lb. (92.5 kN)	19,645 lb. (87.4 kN)	20,843 lb. (92.7 kN)
Tipping load, straight	16,504 lb. (7486 kg)	16,671 lb. (7562 kg)	16,649 lb. (7552 kg)	16,815 lb. (7627 kg)	16,779 lb. (7611 kg)	16,943 lb. (7685 kg)
Tipping load, 40-degree full turn, SAE	13,993 lb. (6347 kg)	14,156 lb. (6421 kg)	14,127 lb. (6408 kg)	14,288 lb. (6481 kg)	14,246 lb. (6462 kg)	14,407 lb. (6535 kg)
Reach, 45-degree dump, 7-ft. (2.13 m) clearance	63.03 in. (1601 mm)	62.99 in. (1600 mm)	62.05 in. (1576 mm)	61.93 in. (1573 mm)	62.05 in. (1576 mm)	61.93 in. (1573 mm)
▲ Reach, 45-degree dump, full height	45.20 in. (1148 mm)	43.78 in. (1112 mm)	43.31 in. (1100 mm)	41.85 in. (1063 mm)	43.31 in. (1100 mm)	41.85 in. (1063 mm)
▲ Dump clearance, 45 degree, full height	106.73 in. (2711 mm)	109.25 in. (2775 mm)	108.30 in. (2750 mm)	110.90 in. (2816 mm)	108.30 in. (2750 mm)	110.90 in. (2816 mm)
▲ Overall length	23 ft. 9.5 in. (7.25 m)	23 ft. 5.9 in. (7.16 m)	23 ft. 7.0 in. (7.19 m)	23 ft. 3.4 in. (7.19 m)	23 ft. 7.0 in. (7.19 m)	23 ft. 3.4 in. (7.19 m)
Loader clearance circle, bucket in carry position	37 ft. 9.3 in. (11.51 m)	37 ft. 7.3 in. (11.46 m)	37 ft. 8.1 in. (11.48 m)	37 ft. 6.1 in. (11.43 m)	37 ft. 8.1 in. (11.48 m)	37 ft. 6.1 in. (11.43 m)
Operating weight	24,972 lb. (11 327 kg)	24,780 lb. (11 240 kg)	24,705 lb. (11 206 kg)	24,692 lb. (11 200 kg)	24,811 lb. (11 254 kg)	24,621 lb. (11 188 kg)

\*Allied attachments ordered through John Deere dealers.

Loader operating information is based on machine with all standard equipment, 17.5-25, 12 PR L2 tires, two rear counterweights, ROPS cab, 175-lb. (79 kg) operator, and full fuel tank. This information is affected by tire size, ballast, and different attachments.

## ADJUSTMENTS TO OPERATING WEIGHTS FOR BUCKETS

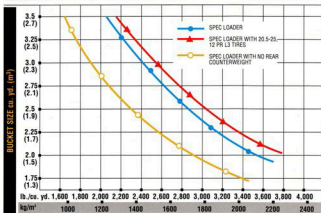
Adjustments to operating weights and tipping loads for 2.25 cu. yd. (1.7 m<sup>3</sup>) excavating bucket

Add (+) or deduct (-) lb. (kg) as indicated for

Loaders with	Operating Weight	Tipping Load, Straight	Tipping Load, 40-Degree Full Turn
15.5-25, 12 PR L2 tires without CaCl <sub>2</sub>	-194 lb. (-88 kg)	-123 lb. (-56 kg)	-108 lb. (-49 kg)
15.5-25, 12 PR L2 tires with CaCl <sub>2</sub> *	+745 lb. (+338 kg)	+1,078 lb. (+489 kg)	+930 lb. (+422 kg)
17.5-25, 12 PR L2 tires with CaCl <sub>2</sub> *	+1,179 lb. (+535 kg)	+1,508 lb. (+684 kg)	+1,303 lb. (+591 kg)
17.5-25, 12 PR L3 tires without CaCl <sub>2</sub>	+132 lb. (+60 kg)	+86 lb. (+39 kg)	+73 lb. (+33 kg)
17.5-25, 12 PR L3 tires with CaCl <sub>2</sub> *	+1,312 lb. (+595 kg)	+1,592 lb. (+722 kg)	+1,376 lb. (+624 kg)
17.5-25, Radial, One Star L2 equivalent tires without CaCl <sub>2</sub>	+379 lb. (+172 kg)	+243 lb. (+110 kg)	+209 lb. (+95 kg)
17.5-25, Radial, One Star L2 equivalent tires with CaCl <sub>2</sub> *	+1,559 lb. (+707 kg)	+1,790 lb. (+794 kg)	+1,512 lb. (+686 kg)
20.5-25, 12 PR L2 tires without CaCl <sub>2</sub>	+794 lb. (+360 kg)	+509 lb. (+231 kg)	+439 lb. (+199 kg)
20.5-25, 12 PR L2 tires with CaCl <sub>2</sub> *	+2,615 lb. (+1186 kg)	+2,835 lb. (+1286 kg)	+2,449 lb. (+1111 kg)
20.5-25, 12 PR L3 tires without CaCl <sub>2</sub>	+1,085 lb. (+492 kg)	+694 lb. (+315 kg)	+597 lb. (+271 kg)
20.5-25, 12 PR L3 tires with CaCl <sub>2</sub> *	+2,906 lb. (+1318 kg)	+3,020 lb. (+1370 kg)	+2,608 lb. (+1183 kg)
ROPS canopy in lieu of ROPS cab	-320 lb. (-145 kg)	-275 lb. (-125 kg)	-222 lb. (-101 kg)
Remove two optional counterweights (1,724 lb. [782 kg])	-1,724 lb. (-782 kg)	-3,497 lb. (-1586 kg)	-2,875 lb. (-1304 kg)
First optional counterweight (760 lb. [345 kg]) installed, second optional counterweight (946 lb. [782 kg]) removed	-935 lb. (-424 kg)	-1,907 lb. (-865 kg)	-1,567 lb. (-711 kg)

\*Only one optional counterweight is allowed with ballast. Two optional counterweights not to be used when CaCl<sub>2</sub> ballast is used in the tires.

## BUCKET SELECTION GUIDE\*



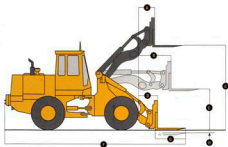
MATERIAL (Loose weight)	lb/cu ft	kg/m³
Caliche	2,100	1250
Cinders	1,000	590
Clay and gravel, dry	2,400	1420
Clay and gravel, wet	2,600	1540
Clay, dry	2,500	1480
Clay, natural bed	2,800	1660
Clay, wet	2,800	1660
Coal, anthracite, broken	1,850	1100
Coal, bituminous, broken	1,400	830
Earth, dry, packed	2,550	1510
Earth, loam	2,100	1250
Earth, wet, excavated	2,700	1620
Granite, broken or large crushed	2,800	1660
Gravel, dry	2,550	1510
Gravel, dry 1/2" to 2" (13 to 50 mm)	2,850	1690
Gravel, pit run (gravelly sand)	3,250	1930
Gravel, wet 1/2" to 2" (13 to 50 mm)	3,400	2030
Gypsum, crushed	2,700	1600
Limestone, broken or crushed	2,600	1540
Magnetite, iron ore	4,700	2790
Phosphate rock	2,160	1280
Pyrites, iron ore	4,350	2580
Sand and gravel, dry	2,900	1720
Sand and gravel, wet	3,400	2020
Sand, dry	2,400	1420
Sand, wet	3,100	1840
Sandstone, broken	2,550	1510
Shale	2,100	1250
Slag, broken	2,950	1750
Stone, crushed	2,700	1600
Topsoil	1,600	950

\*This guide, representing bucket sizes not necessarily manufactured by Deere, will help in selecting the proper bucket size for material density and loader configuration. Optimum bucket size is determined after adding or subtracting all tipping load changes due to optional equipment.

### DIMENSIONS/OPERATING INFORMATION WITH PALLET FORK\*

➊ Reach, fully raised.....	29.75 in. (756 mm)
➋ Maximum reach, fork level.....	5 ft. 1.1 in. (1552 mm)
➌ Fork height, fully raised.....	11 ft. 7 in. (3532 mm)
➍ Reach, ground level.....	38.5 in. (979 mm)
➎ Fork height, maximum reach.....	5 ft. 5.75 in. (1670 mm)
➏ Overall length.....	▲
➐ Tire length.....	▲
➑ Digging depth.....	4 in. (102 mm)

\*Allied attachments ordered through John Deere dealers.



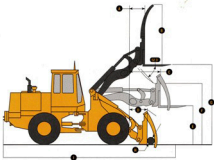
### TOOL CARRIER INFORMATION (PALLET FORK)

▲ Tire Length	48 in. (1219 mm)	54 in. (1372 mm)	60 in. (1524 mm)
Ground to top of tire clearance.....	11 ft. 7 in. (3532 mm)	11 ft. 7 in. (3532 mm)	11 ft. 7 in. (3532 mm)
Maximum reach with fork level.....	5 ft. 1.1 in. (1552 mm)	5 ft. 1.1 in. (1552 mm)	5 ft. 1.1 in. (1552 mm)
▲ Overall length.....	25 ft. 0.3 in. (763 mm)	25 ft. 6.4 in. (778 mm)	26 ft. 0.4 in. (794 mm)
Tipping load, straight (fork level, load centered on time).....	12,879 lb. (5842 kg)	12,509 lb. (5674 kg)	12,163 lb. (5517 kg)
Tipping load, 40-degree full turn (fork level, load centered on time).....	10,986 lb. (4983 kg)	10,666 lb. (4838 kg)	10,364 lb. (4701 kg)
Operating weight.....	24,023 lb. (10,897 kg)	24,066 lb. (10,916 kg)	24,105 lb. (10,934 kg)

**DIMENSIONS/OPERATING INFORMATION WITH LOG AND LUMBER FORK\***

1	Reach, fully raised	2 ft. 6.75 in. (781 mm)
2	Overall height, clamp open	8 ft. (2438 mm)
3	Maximum reach, fork level	5 ft. 2.1 in. (1577 mm)
4	Reach, ground level	3 ft. 2.5 in. (978 mm)
5	Fork height, maximum reach	5 ft. 7.5 in. (1716 mm)
6	Dump height, fully raised	7 ft. 6.2 in. (2292 mm)
7	Fork height, fully raised	11 ft. 8.8 in. (3578 mm)
8	Minimum diameter, clamp closed	6 in. (152 mm)
9	Overall length	25 ft. 0.3 in. (7.63 m)

\*Allied attachments ordered through John Deere dealers.

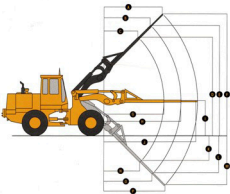

**TOOL CARRIER INFORMATION (LOG AND LUMBER FORK)**

Tire length	48 in. (1219 mm)
Ground to top of clamp clearance	19 ft. 8.8 in. (6015 mm)
Maximum reach with fork level	5 ft. 2.1 in. (1577 mm)
Overall length	25 ft. 0.3 in. (7.63 m)
Tipping load, straight (fork level, load centered on tire)	11,485 lb. (5210 kg)
Tipping load, 40-degree full turn (fork level, load centered on tire)	9,793 lb. (4442 kg)
Operating weight	25,560 lb. (11 594 kg)

**DIMENSIONS/OPERATING INFORMATION WITH MATERIAL-HANDLING ARM\***

1	Reach, fully raised (extended)	12 ft. 3.3 in. (3741 mm)
2	Reach, fully raised (mid-position)	10 ft. 3.2 in. (3130 mm)
3	Reach, fully raised (retracted)	7 ft. 4.3 in. (2243 mm)
4	Height, fully raised (retracted)	17 ft. 6.2 in. (5338 mm)
5	Height, fully raised (mid-position)	19 ft. 10.5 in. (6058 mm)
6	Height, fully raised (extended)	21 ft. 6.1 in. (6555 mm)
7	Maximum reach (retracted)	11 ft. 9.8 in. (3601 mm)
8	Maximum reach (mid-position)	15 ft. 6.8 in. (4745 mm)
9	Height, maximum reach	6 ft. 2.4 in. (1891 mm)
10	Maximum reach (extended)	18 ft. 1.8 in. (5532 mm)
11	Depth, below ground (retracted)	5 ft. 7 in. (1706 mm)
12	Depth, below ground (mid-position)	8 ft. 3.8 in. (2536 mm)
13	Depth, below ground (extended)	10 ft. 2.4 in. (3109 mm)
14	Reach, below ground (retracted)	6 ft. 11 in. (2130 mm)
15	Reach, below ground (mid-position)	9 ft. 6 in. (2896 mm)
16	Reach, below ground (extended)	11 ft. 3.3 in. (3436 mm)

\*Allied attachments ordered through John Deere dealers.


**TOOL CARRIER INFORMATION (MATERIAL-HANDLING ARM)**

Boom position	Retracted	Mid-position	Extended
Operating load	3,534 lb. (1603 kg)	2,761 lb. (1252 kg)	2,404 lb. (1099 kg)
Tipping load, straight	8,318 lb. (3773 kg)	6,508 lb. (2952 kg)	5,670 lb. (2572 kg)
Tipping load, 40-degree full turn	7,068 lb. (3206 kg)	5,523 lb. (2505 kg)	4,808 lb. (2181 kg)
Operating weight	24,077 lb. (10 921 kg)	24,077 lb. (10 921 kg)	24,077 lb. (10 921 kg)

SAE	SAE	SAE	SAE	
<b>ENGINE</b>	<ul style="list-style-type: none"> <li>Three-function valve, dual-lever control with auxiliary lever for third function</li> <li>Three-function valve, single-lever control with auxiliary lever for third function</li> <li>Two-function valve with dual-lever control</li> </ul>	<ul style="list-style-type: none"> <li>voltage - Low transmission oil pressure - Hydraulic oil filter restriction - Low brake pressure - Park brake on - Ether start on (if equipped) - Low steering pressure (and secondary steering activated, if equipped) - Flaten seat belt reminder - Turn signals/flashes / Bulb-in diagnostics - Fault code retrieval - On-board diagnostics for all monitors, wiring, gauges, sensors, etc.</li> </ul>		
<ul style="list-style-type: none"> <li>Antifreeze, -34°F (-37°C)</li> <li>Coilstart recovery tank</li> <li>Enclosed safety fan guard</li> <li>Muffler, vertical through hood, with curved-end exhaust stack</li> <li>Oil-to-water engine oil cooler</li> <li>Quick-release John Deere dual-stage fuel filter and water separator</li> <li>Turbocharger provides spark preheating</li> <li>Electric ether start aid</li> <li>Engine coolant heater, 1,000 watts, 110 volts</li> <li>Environmentally-friendly engine oil drain*</li> <li>High-capacity precoolers*</li> <li>Perforated engine side shields and hood*</li> <li>Radiator sand screen</li> <li>Sucker fan with controlled grille screen*</li> </ul>	<ul style="list-style-type: none"> <li>Power steering (two cylinders) and 40-degree articulation each side and rubber cushion stop</li> <li>Conforms to SAE J1511 with emergency manual mode</li> <li>Secondary steering</li> <li>Conforms to SAE J53</li> </ul>	<ul style="list-style-type: none"> <li>Horn, electric</li> <li>Conform to SAE J994, J1446</li> <li>Key start switch with electric fuel shut-off</li> <li>Mirrors</li> <li>Interior (2), 4 in. x 8 in. (100 mm x 200 mm) / Exterior (2), 7.88 in. x 11.68 in. (200 mm x 300 mm) / Conform to SAE J985</li> <li>Rear quarter vertical sliding windows</li> <li>Seat belt, 2 in. (51 mm), with retractors</li> <li>Conforms to SAE J388</li> <li>Seat belt, 3 in. (76 mm), with retractors</li> <li>Conforms to SAE J388</li> <li>Slip-resistant steps and ergonomically-located handholds</li> <li>Conform to SAE J185</li> <li>Steering wheel, textured, with spinner knob</li> <li>Storage compartment, under seat, lockable</li> <li>Tilt steering</li> <li>Air conditioning (field installed)</li> <li>AM-FM stereo radio*</li> <li>Left platform, slip-resistant steps, and ergonomically-located handholds</li> <li>Conforms to SAE J185</li> <li>Operator protection package**</li> <li>ROPS-to-cab conversion panels*</li> <li>Seat backrest extension</li> </ul>		
<b>ELECTRICAL</b>	<ul style="list-style-type: none"> <li>Three-piece wheels</li> <li>Single-piece wheels</li> <li>15.5-25, 12 PR L2</li> <li>17.5-25, 12 PR L2</li> <li>17.5-25, 12 PR L3</li> <li>Three-piece wheels</li> <li>17.5-25 XTLA Radial 16 PR One Star L2</li> <li>17.5-25 XHAT Radial 16 PR One Star L3</li> <li>20.5-25, 12 PR L2</li> <li>20.5-25, 12 PR L3</li> <li>20.5-25 XTLA Radial 24 PR One Star L2</li> <li>23.1-26, 10 PR L52</li> <li>281-26, 14 PR L52</li> <li>Four-filled tires*</li> <li>Solid rubber tires*</li> </ul>	<ul style="list-style-type: none"> <li>Operator's station</li> <li>C canopy</li> <li>Isolation mounted ROPS/TOPS / Integral load guard for material fork use - Conforms to SAE J1040C, J231, ISO3471, ISO3449 / Cap holder / Coat hooks (2) / Floormat / Left side access / In-transport cover</li> <li>vandal protection / Provision for rotating beacon</li> <li>Cab</li> <li>Isolation mounted ROPS/TOPS / Integral load guard for material fork use - Conforms to SAE J1040C, J231, ISO3471, ISO3449 - Sound suppressed / Cap holder / Coat hooks (2) / Deluxe headliner / Floormat with lunch box holder / Dome and map light / Filtered fresh air intake heater/delester, 36,000 Btu/hr. (10.5 kW) / Front two-speed and rear one-speed windshield wiper and washers / Tinted safety glass / Provision for rotating beacon</li> <li>Cab with air conditioning, 27,000 Btu/hr. (7.9 kW)</li> <li>Alternator, 135 amp / Isolation mounted ROPS/POPS / Integral load guard for material fork use - Conforms to SAE J1040C, J231, ISO3471, ISO3449 - Sound suppressed / Cap holder / Coat hooks (2) / Deluxe headliner / Floormat / Dome and map light / Filtered fresh air intake heater/delester, 36,000 Btu/hr. (10.5 kW) / Front two-speed and rear one-speed windshield wiper and washers / Tinted safety glass / Provision for rotating beacon</li> <li>Ashtay</li> <li>Deluxe suspension vinyl seat with adjustable armrests, fore-aft, backrest tilt, lumbar and height/weight</li> <li>Conforms to SAE J899</li> <li>Deluxe suspension cloth seat with adjustable armrests, fore-aft, backrest tilt, lumbar and height/weight</li> <li>Conforms to SAE J899</li> <li>Electronic monitor system and audible/visual warning</li> <li>Digital display, illuminated - Alternator voltage - Hourmeter - Speedometer (mph/kph) - Tachometer / Gauges, illuminated - Engine coolant temperature - Fuel - Transmission oil temperature - Indicators - Low radiator coolant level - Engine air filter restriction - Low alternator</li> </ul>	<ul style="list-style-type: none"> <li>Alternator, 95 amp</li> <li>Alternator, 135 amp</li> <li>Auxiliary fused circuits for fuses (4)</li> <li>Auxiliary start receptacle</li> <li>Batteries (2), 320-ent, reserve capacity, 1,250 CCA</li> <li>Batteries (2), 380-ent, reserve capacity, 1,900 CCA</li> <li>Blade-type multi-fused circuits</li> <li>By-pass starter safety cover on starter</li> <li>Electrical load center for service, lockable</li> <li>Lights</li> <li>Two front and two rear furlching and turn signals with guards / Two front halogen driving with guards, 35,200 candlepower each / Two rear reflectors, 200 rear stop and tail / Conform to SAE J99</li> <li>Front and two rear halogen work lights (2), with guards, 35,200 candlepower each</li> <li>Positive terminal battery light</li> <li>Provision for license plate light</li> <li>Provision for rotating beacon</li> <li>Battery disconnect</li> <li>Rotating beacon*</li> </ul>	<ul style="list-style-type: none"> <li>Quick coupler valve, lines, and control</li> <li><b>LOADERS</b></li> <li>Coupler for bucket and other attachments, with hydraulically actuated locking pins for attachments</li> <li>Loader boom service lock</li> <li>Conforms to SAE J38</li> <li>Parallel lift linkage, single bucket cylinder with guide-link, boom height control, and automatic return-to-dig</li> <li>Boom extensions*</li> <li>High lift*</li> <li>Material swing system*</li> <li>Quick coupler valve, lines, and control</li> </ul>
<b>AXLES</b>	<ul style="list-style-type: none"> <li>Remote grease bank for rear axle</li> <li>Both-on axle seal guards*</li> <li>Front axle disconnect</li> <li>Hydraulic locking front and rear</li> <li>Hydraulic locking front, conventional rear</li> <li>NoSPN front, conventional rear</li> <li>Wheel spacers for use with chains*</li> </ul>	<ul style="list-style-type: none"> <li>Deluxe suspension vinyl seat with adjustable armrests, fore-aft, backrest tilt, lumbar and height/weight</li> <li>Conforms to SAE J899</li> <li>Deluxe suspension cloth seat with adjustable armrests, fore-aft, backrest tilt, lumbar and height/weight</li> <li>Conforms to SAE J899</li> <li>Electronic monitor system and audible/visual warning</li> <li>Digital display, illuminated - Alternator voltage - Hourmeter - Speedometer (mph/kph) - Tachometer / Gauges, illuminated - Engine coolant temperature - Fuel - Transmission oil temperature - Indicators - Low radiator coolant level - Engine air filter restriction - Low alternator</li> </ul>	<ul style="list-style-type: none"> <li>Full line of buckets, pallet forks, log and lumber forks, material-handling arms, and other attachments</li> </ul>	
<b>BRAKES</b>	<ul style="list-style-type: none"> <li>Automatic spring-applied, hydraulic-released park brake</li> <li>Disc and caliper type, attached to transmission output shaft / Conforms to SAE J1473, ISO3450</li> <li>Wet disc, self-adjusting primary service brakes</li> <li>Conform to SAE J1473, ISO3450</li> </ul>	<ul style="list-style-type: none"> <li>Electronic monitor system and audible/visual warning</li> <li>Digital display, illuminated - Alternator voltage - Hourmeter - Speedometer (mph/kph) - Tachometer / Gauges, illuminated - Engine coolant temperature - Fuel - Transmission oil temperature - Indicators - Low radiator coolant level - Engine air filter restriction - Low alternator</li> </ul>	<ul style="list-style-type: none"> <li>Engine side shields / Fuel / Hydraulic reservoir / Instrument panel / Radiator / Transmission dipstick</li> <li>Custom paint for castic environments*</li> <li>Fenders, front and rear</li> <li>Front frame, rear frame, and transmission bottom guards</li> <li>Hinged front and rear frame bottom guards*</li> <li>Eliminated license plate bracket</li> <li>Lift and tie-down hooks</li> <li>Rear counterweights with integral dashbar and pin</li> <li>935 lb. (424 kg) / 1,724 lb. (782 kg)</li> <li>Ride control system</li> <li>SNV emblem*</li> <li>Transmission side frame guards</li> </ul>	
<b>HYDRAULIC SYSTEM</b>	<ul style="list-style-type: none"> <li>Hydraulic oil cooler behind radiator</li> <li>Hydraulic reservoir with sight gauge and spin-on breather filter</li> <li>Return-to-dig feature</li> <li>Automatic boom height control</li> <li>Auxiliary cylinder circuits*</li> <li>Auxiliary motor circuit*</li> <li>Loader control conversion*</li> </ul>			

KEY: ● Standard equipment ■ Optional or special equipment

\*See your John Deere dealer for further information.



Net engine power is with standard equipment including air cleaner, exhaust system, alternator, and cooling fan, at standard conditions per SAE J1995 and SAE J1349, using the 2-10 test at 2500 RPM. No derating is required up to 10,000 ft. (3050 m) altitude. Gross power is without cooling fan.

Specifications and design subject to change without notice. Wherever applicable, specifications are in accordance with SAE standards. Except where otherwise noted, these specifications are based on a unit with all standard equipment: 17.5-25, 12 PR L2 tires with two rear counterweights, ROPS cab, full fuel tank, and 175-hp, (79 kg) operator.

