

 JOHN DEERE

CONSTRUCTION EQUIPMENT

DOZERS



MODEL NO.

**1050C Waste Handler**



SOLID WASTE. SOLID SOLUTIONS.

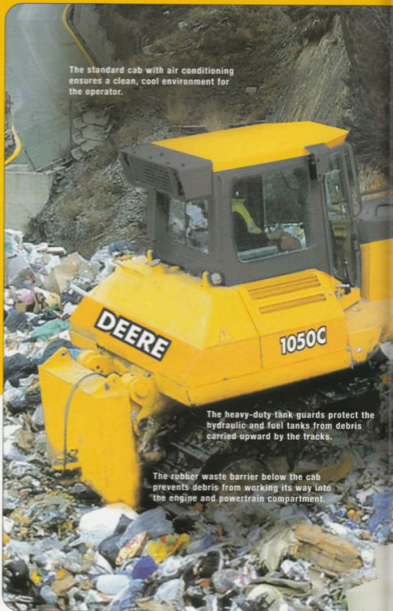
**1050C**

## THERE IS A DIFFERENCE

When you need a machine that was designed to push trash, and lots of it, look no further than the 324-hp 1050C Waste Handler. Unlike many other waste machines on the market, the 1050C was built with standard features ideal for the waste disposal industry. Combine these features — including a full-featured hydrostatic drivetrain and heavy-duty undercarriage design — with our extensive guarding package, and you've got a machine that's ready to tackle your waste site.



The standard dual final drive seals offer two layers of protection. The operator is alerted if damage to the outer seal occurs. Additional seal guards help keep penetrating debris out of the seal area.



The standard cab with air conditioning ensures a clean, cool environment for the operator.

The heavy-duty tank guards protect the hydraulic and fuel tanks from debris carried upward by the tracks.

The rubber waste barrier below the cab prevents debris from working its way into the engine and powertrain compartment.

CONSTRUCTION EQUIPMENT

DOZERS



MODEL NO.

## 1050C Waste Handler

The optional lighting package offers up to ten work lights for round-the-clock illumination.

The standard hinged bottom guards are designed to provide complete protection and form a barrier to keep debris from entering the engine compartment.



The standard radiator is designed with wide fin spacing to allow debris to pass through during normal operation and cleaning.



The hydraulically driven engine fan is temperature controlled and can be reversed for easy cleaning.



The standard engine covers are perforated to increase airflow while limiting the size of debris entering the engine compartment.

# 1050C

DOZER

SPECIFICATIONS



## ENGINE 1050C

Type	.....	Liebherr D 9406 T-E intercooled and turbocharged diesel
Engine power per ISO 9249	.....	324 SAE net hp (242 kW) @ 1,800 rpm
Cylinders (wet sleeve)	.....	V6
Displacement	.....	793 cu. in. (13 L)
Fuel consumption, typical	.....	7.7 to 13.2 gal./hr. (29 to 50 L/h)
Maximum net torque	.....	1,129 lb.-ft. (1530 Nm) @ 1,200 rpm
Lubrication	.....	pressure system with full-flow spin-on filter and integrated oil-to-water cooler
Air cleaner	.....	dual stage dry type with safety element and aspirated precleaner, with dash-mounted restriction indicator
Electrical system	.....	24 volt with 85-amp alternator
Cooling fan	.....	blower-type, hydrostatically driven, thermostatically controlled
Cold-starting aid	.....	flame-glow intake air heater

## CAPACITIES

Fuel tank with lockable cap (12-hour typical usage)	.....	161 gal. (610 L)
Cooling system with recovery tank	.....	18 gal. (68 L)
Engine oil with spin-on filter	.....	6.3 gal. (24 L)
Final drive (each)	.....	5.5 gal. (21 L)
Hydraulic/hydrostatic reservoir with filter	.....	55 gal. (210 L)
Splitter drive	.....	6.3 qt. (6 L)

All power train and hydraulic systems allow for up to 45-degree maximum operation.

## UNDERCARRIAGE

Seven-roller track frame with front and rear track guides and sprocket guard. John Deere Dura-Trax™ features deep-heat-treated, sealed, and lubricated track links and through-hardened, sealed, and lubricated rollers for maximum wear resistance; extreme-duty shoes for severe applications

Sprocket	.....	segmented
Chain	.....	sealed and lubricated
Track shoes, each side	.....	44
Ground contact area		
22-in. (560 mm) grouser width (extreme duty single bar)	.....	5,510 sq. in. (35 550 cm <sup>2</sup> )
24-in. (610 mm) grouser width (extreme duty single bar)	.....	6,000 sq. in. (38 700 cm <sup>2</sup> )
28-in. (711 mm) grouser width (extreme duty single bar)	.....	6,990 sq. in. (45 100 cm <sup>2</sup> )
Ground clearance, minimum with single-bar grouser (excluding grouser height)	.....	25 in. (625 mm)

## UNDERCARRIAGE (CONTINUED)

Length of track on ground	.....	125 in. (3174 mm)
Track gauge, standard	.....	86 in. (2180 mm)
Oscillation at front idler	.....	13 in. (330 mm)
Track rollers, each side	.....	7
Carrier rollers, each side	.....	2
Track pitch	.....	8.5 in. (215 mm)

## GROUND PRESSURES

	<i>semi-U dozer blade with power tilt and mechanical pitch adjustment</i>	<i>U blade with power tilt and mechanical pitch adjustment</i>
With standard equipment, full fuel tank, and 175-lb. (79 kg) operator		
With 22-in. (560 mm) extreme-duty single- bar grouser shoes	.....	13.4 psi (93 kPa) 13.7 psi (95 kPa)
With 24-in. (610 mm) extreme-duty single- bar grouser shoes	.....	12.4 psi (86 kPa) 12.7 psi (88 kPa)
With 28-in. (711 mm) extreme-duty single- bar grouser shoes	.....	10.8 psi (74 kPa) 11.0 psi (76 kPa)

## SAE OPERATING WEIGHTS

	<i>semi-U dozer blade with power tilt and mechanical pitch adjustment</i>	<i>U blade with power tilt and mechanical pitch adjustment</i>	<i>tractor ship- ping weight without blade or attachments</i>
With standard equipment, full fuel tank, and 175-lb. (79 kg) operator			
With 22-in. (560 mm) extreme-duty single- bar grouser shoes	.....	73,985 lb. 75,705 lb. 60,560 lb. (33 560 kg) (34 340 kg) (27 480 kg)	
With 24-in. (610 mm) extreme-duty single- bar grouser shoes	.....	74,515 lb. 76,235 lb. 62,110 lb. (33 800 kg) (34 580 kg) (27 720 kg)	
With 28-in. (711 mm) extreme-duty single- bar grouser shoes	.....	75,525 lb. 77,245 lb. 62,120 lb. (34 260 kg) (35 040 kg) (28 180 kg)	



Net engine power is with standard equipment including air cleaner, exhaust system, alternator, and cooling fan, at standard conditions per SAE J1349 and DIN 62708, using No. 2-D fuel at 35 API gravity. No derating is required up to 10,000-ft. (3050 m) altitude.

Specifications and design subject to change without notice. Wherever applicable, specifications are in accordance with SAE standards. Except where otherwise noted, these specifications are based on a unit with modular ROPS/cab with air conditioning, 165-in. (4191 mm) semi-U blade with standard cutting edges, full fuel tank, 175-lb. (79 kg) operator, and standard equipment.

