

B A C K H O E L O A D E R S

410E



The mid-size backhoe with big ability

Strong digging and craning specs and high-production ability place the 410E at the top of the 15 to 16-foot class – enabling it to equal or exceed the performance of bigger backhoes.

In addition to its durable digging structures, there are plenty of other powerful reasons why this 90 horsepower backhoe is such a strong performer.

An excavator-style hydraulic system delivers immediate response, superior combined-function metering, and low-effort control regardless of the load or application. What's more, the high-torque PowerTech® diesel, tight torque-converter match, and smooth-shifting 4-speed transmission make the 410E extremely nimble and responsive.

The 410E is also available with the industry's quietest cab and most effective MFWD. As with all Deere backhoes, an automatic park brake and more than a dozen other standard safety features are yours as well.

For the complete 410E story and specs, thumb through the following pages. Then get to your Deere dealership for a hands-on demo.







Boom starts wide at the base and narrows to less than 9-inches through the line-of-sight. Unlike the large "dorsal fin" on other backhoes, the 410E's compact cylinders share a low-profile single-pin attaching point that doesn't impair side-swing visibility, either.



Easy-to-activate boom lock secures the backhoe in a vertical position for smooth transport. Rubber bumper ensures that the boom stays snug and rattle-free.



Exclusive linkage provides 190-degree bucket rotation, letting you go from power-dig to truck-loading position without pulling pin. Makes vertical-wall excavations easier, too. Excavator-style curved side-cutters enable you to dig around buried pipe, minimizing handwork. Bucket and linkage pins are lubricated for long life.

Boom and dipperstick are box-constructed of high-strength steel for heavy-duty durability without excess weight. Forked top and bottom and large pins provide extra beef in these high-stress areas.



Crane heavy objects? With 6,055 pounds of dipperstick lift, the 410E can handle it. Buckets are equipped with lift eyes for extra convenience.



410E's backhoe geometry has all the angles covered

Equipped with standard dipperstick, the 410E lets you reach out 19 feet 8 inches and load into trucks easier. Lets you excavate closer, too, for enhanced visibility and less repositioning. But its Power Curve™ boom isn't the only advantage that enables this heavy-duty backhoe to do things others can't.

Crowd power, swing torque, and boom and dipperstick lift are impressive. So are the low-effort controls. Closed-center pressure-compensating load-sensing hydraulics give superb combined-function metering. Unlike other so-called PCLS systems, all functions have equal priority. When a heavy load is encountered, boom, dipperstick, and bucket operations adjust proportionately, giving you smooth, consistent response regardless of engine speed or load. So you can do your best work.



Extendible dipperstick option adds 4 feet of digging depth and reach. The outer box extends, letting you grasp cumbersome objects such as a concrete slab between the bucket and box gripper teeth while retracting or extending. Wear strips are easy to lube, easy to replace.



Available quick-coupler lets you change buckets and attachments easily. Requires no special pins, tools, or buckets. Accommodates Cat, Case, and older John Deere buckets, as well.



▶ *Power is nothing without control. Two levers are standard, Case, Ford, and SAE controls can be factory or field installed. Low-effort and smooth response are yours regardless of which configuration you choose.*

▶ *Rearward-angled 10-foot-wide stabilizers and no-drift cylinders provide rock-solid stability for craning heavy objects and precise placement of materials. Optional reversible pads have an aggressive side for soft terrain and a rubber side for hard surfaces.*

Here's why 410E is the loader leader

The "other" working end of a John Deere backhoe has long been considered the industry's best. And the many advantages found in the 410E's refined loader will further enhance that reputation.

The robot-welded boom is constructed of laser-cut, high-tensile steel for superior strength without excess weight. Its one-piece continuous-curve box-section design eliminates the need for additional plating in the knee area. And a large-diameter crosstube adds rigidity to resist flexing.

What's more, the curved knee accommodates tall tires for better flotation and increased ground clearance. Provides exceptional reach, too, enabling you to easily dump beyond the center of most trucks for quick and easy loading.

An optimum lift-to-crowd match and smooth combined function metering make heaping the bucket nearly effortless. The single bucket-cylinder utilizes the piston-end for powerful breakout, and the rod-end for fast dumping. Add to that a refined linkage that delivers smooth self-leveling and bucket control, and you get fast loading cycles and better material retention. Makes grading easier, too.

Transmission-disconnect switch diverts full engine power to the hydraulics for faster cycles.



MFWD switch is uniquely shaped and positioned in the console close to the loader lever for convenient, no-look on/off.

Short-throw single lever puts low-effort control of the boom and bucket in the palm of your right hand. Second lever is for auxiliary functions such as a multi-purpose bucket.



Impressive 34-percent torque reserve, tight torque-converter match, and powerful 10,300-pound breakout force make the 410E one aggressive loading tractor.



An available quick-coupler lets you couple and release buckets and attachments with a flick of a switch.

Single bucket cylinder and loader arms that angle outward combine to give an unobstructed view of the work ahead.



"Torque tube" spillsheet resists bending. C-shape backwall fills and sheds materials easily. Its 52-inch width covers the tire footprint and long-lip helps build larger loads. Cutting edge, full-length skid shoes, and built-in lift eyes are standard. Large-diameter pins deliver long life.



Optional MFWD provides extra power and traction regardless of what's underfoot. Helps heap the bucket, too. Its limited-slip design automatically transfers up to 80 percent of available power to the wheel with the best traction for true 4WD power.

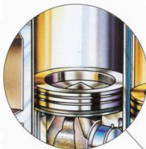


No more shaking the bucket in an attempt to position the load. Superior reach enables the 410E to dump to the center of the truck for easier loading and fast cycles.



A 50-degree turning angle gives the 410E a tight 11-foot 5-inch turning radius for easy moves in close quarters.

It takes guts to build a backhoe this good



Individually replaceable, spin-cast, wet-type cylinder liners dissipate heat for reduced ring wear and oil breakdown. High-ring pistons provide high compression, three low-friction rings deliver superior oil control.

Advanced PowerTech® diesel meets all worldwide emission standards for off-road engines – so the 410E can go to work anywhere rigid standards exist.

Available industrial-strength limited-slip MFWD features a unique offset differential for superior ground clearance. Axle is totally sealed to keep out dirt and contaminants.

Free-breathing cross-flow cylinder head, specially shaped pistons, and contoured valves increase intake and exhaust flows for maximum power output and top fuel efficiency.

Deere-built 4.5 L turbocharged diesel packs a whopping 34-percent torque reserve for impressive pull-through power. This 90 horsepower diesel also delivers 4 1/2-percent more power at 1,800 rpm, letting you throttle back for better fuel economy and reduced noise.

The 4-speed fully synchronized collar-shift transmission is coupled with a single-stage, dual-phase torque converter and planetary reverser for smooth moves.

Transmission is mounted directly to the engine for superior balance; has its own filter for long life.

Jet-spray nozzles bathe the bottom and sides of pistons with cooled oil for longer-life.

Impressive torque rise, tight torque-converter match, and aggressive gearing provide a powertrain that accelerates swiftly, for scaling grades easily, even in 4th gear. Reverse is 10 percent faster than forward, for fast cycles.

Positioned securely in the one-piece unitized mainframe, components are isolated from shock-load stress, yet can be individually removed to speed repairs or downtime.

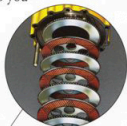
This is one backhoe that has what it takes to beat the daily grind.

From its nearly bulletproof wet-sleeve Deere-built diesel to its never-say-die planetary axle, the 410E is armed with a multitude of advantages – traditional John Deere features that help it live a long, productive, and profitable life.

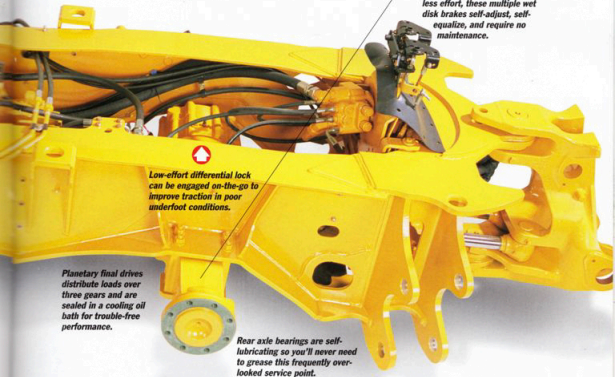
Looking for a hoe that has what it takes to deliver a long-term commitment? John Deere backhoes are manufactured to exacting quality standards in an ISO9001 certified North American factory so you can rest assured you're getting the best. When you know how it's built, you'll choose a 410E.

Closed-center PCLS hydraulic system blends good metering characteristics with low-effort for smooth control. Pump free-wheels when not in use, to optimize power and fuel.

The fully enclosed wet-disk parking brake automatically engages whenever the engine stops. Independent of the service brakes, it's capable of holding the 410E on a 20-degree slope.



Nobody gives you a brake like Deere. Chatter-free and fully modulated so they require less effort, these multiple wet disk brakes self-adjust, self-equalize, and require no maintenance.



Low-effort differential lock can be engaged on-the-go to improve traction in poor underfoot conditions.

Planetary final drives distribute loads over three gears and are sealed in a cooling oil bath for trouble-free performance.

Rear axle bearings are self-lubricating so you'll never need to grease this frequently overlooked service point.

Electric reverser lever allows fingertip direction changes. Built-in detents give smooth, positive control and neutral-start switch prevents accidental machine movement.



Available full-suspension cloth-covered seat with flip-up arms and front-mount controls adjusts eight ways. Standard non-suspension vinyl-covered armchair features the same sculpted cushioning and one-hand simultaneous slide and swing.



Here's everything you need to help you do your best

When you consider the impact that comfort and convenience can have on an operator, it seems counterproductive not to equip your 410E with this state-of-the-art cab.

Visibility is unmatched. Floor-to-ceiling tinted front glass, huge side and rear windows, and narrow, well-positioned ROPS posts provide a virtually unrestricted all-around view.

Short-throw low-effort controls are at your fingertips. And the contoured, fully padded armchair seat and available tilt steering wheel fully adjust.

Even "little extras" are yours for no extra. There's a holder for securing a Thermos and for cradling your coffee cup. Also a jacket hook, storage for the operator's manual or paperwork, and an in-cab rearview mirror, to list just a few.

At less than 76 dB(A), the 410E's enclosed operator station is refreshingly quiet.

Flipping this switch engages or disengages the secondary brake. Independent of the service brakes, it also automatically engages whenever the engine stops.



Electronic monitor or optional gauges can be read at-a-glance from either operating position. Console also houses seat belt warning, ignition, and MFWD switches, as well as climate controls.



Huge doors open wide (right side optional) and out of the way of oncoming traffic. Side windows swing open to the front or rear for flow-through ventilation.

Large, self-cleaning steps and convenient handholds allow easy entrance or exit.



Foot-operated, no-effort differential lock can be engaged on-the-go. This standard feature equalizes power to the rear wheels for increased traction in slick conditions or when moving heavy loads.

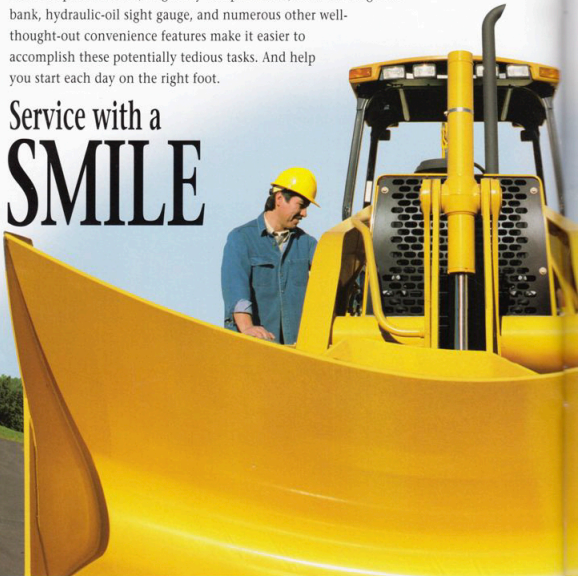


The 40,000 Btu per hour climate control system blends in fresh air and delivers it through directional vents for effective defrosting, heating, and cooling (air-conditioning optional). What's more, cab pressurization helps keep out dust.

Okay, so maybe the 410E's simplified service requirements won't actually make you (or your backhoe) smile. But they won't leave you talking to yourself, either.

Most daily and periodic service points are grouped and ground accessible, making checks, additions, or changes quick and easy. Vertical spin-on filters, large easy-to-open doors, a front-axle grease bank, hydraulic-oil sight gauge, and numerous other well-thought-out convenience features make it easier to accomplish these potentially tedious tasks. And help you start each day on the right foot.

Service with a **SMILE**





Each electrical circuit has its own fuse in this centrally located load center. Helps make troubleshooting and service work quick and easy.



Daily powertrain service is done through this lockable sliding door. Riding on a self-cleaning nylon slide, it provides ground-level access to engine and transmission filler necks and dipsticks, and fuel filter. Add coolant or change the air filter through the large lockable hinged door atop the hood.

Zerks are positioned where you can get a grease gun on them. Wide-open swing frame allows easy access to the hydraulic valve and lines. External boom and dipper cylinders and hoses are also easier to service. Flat-face O-ring seal couplings virtually eliminate annoying and costly leaks.



Eye-level sight gauge provides a contamination-free check of the hydraulic oil level. Give it a quick look on the way to the seat, or while you refuel.



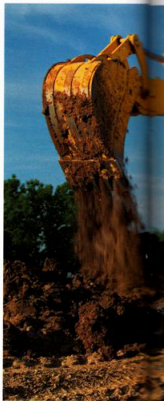
We've got what it takes to keep you working...

With its heavy-duty loader, excavator-style backhoe, and enhanced hydraulic system, a lot of expensive options aren't needed to widen the appeal of your 410E.

Start with a loader or backhoe quick-coupler that lets you change tools in seconds. Add a "wet kit" to deliver high-flow hydraulic power out back. Or even a solenoid-controlled low-flow auxiliary valve for hand-held or cylinder-actuated attachments. What you have now is a highly versatile machine that can handle virtually any hydraulic-powered attachment. And there are plenty from which to choose.

But regardless of how many "bells and whistles" it may have, no backhoe is any better than the support behind it. That's why every 410E is backed by a large network of dependable dealers with well-stocked parts inventories, factory-trained technicians, and comprehensive support programs. Add a one-year warranty, historically high resale value, and low owning and operating costs, and the reasons for running a 410E are better than ever.

Scan this page for an idea of the kind of attachments available for the 410E. Then get in to see your John Deere dealer and get to work.



LOADER

BACKHOE



Angle dozer



Loader quick coupler



Side-dump bucket



Auger



Pavement removal bucket



Multi-purpose bucket



Broom



Claw



Boom jib



Jaw bucket



Snowplow



Forks

OTHER



Signpost peller



Posthole digger



Signpost driver



Breaker



Asphalt cutter



Brush cutter



Saw



Cable cutter



Chain saw



Hydraulic alternator



Trash pump



Thumb



Cemetery bucket



Hydraulic compactor



Backhoe quick coupler



Backfill blade



V-ditching bucket



Ripper tooth



Hydraulic breaker



Hand-held compactor

ENGINE**410E**

Type	John Deere 4045T Turbocharged
Rated power @ 2,200 rpm	98 SAE gross hp (73 kW) 90 SAE net hp (67 kW)
Cylinders	4
Displacement	276 cu. in. (4,524 L)
Fuel consumption, typical	1.5 to 2.5 gal./hr. (5.7 to 9.5 L/h)
Torque rise	.34 percent
Maximum net torque	287 lb.-ft. (389 Nm)
Lubrication	pressure system with full-flow spin-on filter and cooler
Air cleaner	dual stage dry type with safety element and precleaner
Electrical system	12 volt with 65-amp alternator
Sucker-type cooling fan	

TRANSMISSION

four-speed, helical cut gear, collar shift transmission synchronized in all gears with hydraulic reverser

Torque converter, single stage, dual phase with 2.12:1 stall ratio	11 in. (280 mm)	
Travel speeds with 19.5L-24 rear tires	<i>Forward</i>	<i>Reverse</i>
Gear 1	3.6 mph (5.8 km/h)	4.0 mph (6.4 km/h)
Gear 2	5.9 mph (9.5 km/h)	6.6 mph (10.6 km/h)
Gear 3	14.4 mph (23.2 km/h)	16.1 mph (25.9 km/h)
Gear 4	24.4 mph (39.3 km/h)	27.2 mph (43.8 km/h)

FINAL DRIVES

heavy-duty, inboard planetary final drives evenly distribute shock loads over three gears

BRAKES

hydraulic wet disk, mounted inboard, self adjusting and self equalizing

CAPACITIES

Fuel tank (with ground level fueling)	38 gal. (136 L)
Engine coolant	17 qt. (16 L)
Engine oil including filter	14 qt. (13 L)
Torque converter and transmission	15 qt. (14 L)
Hydraulic system	25 gal. (95 L)
Rear axle	3.5 gal. (13 L)
Mechanical-front-wheel-drive axle	2.3 gal. (8.5 L)

STEERING

hydrostatic power steering conforms to SAE J1151, emergency steering to SAE J53

Non-powered axle	
Curb turning radius with brakes	11 ft. 8 in. (3.56 m)
Without brakes	13 ft. 3 in. (4.04 m)
Bucket clearance circle with brakes	31 ft. 8 in. (9.65 m)
Without brakes	34 ft. 9 in. (10.59 m)
Steering wheel turns, stop to stop	2.3 to 3.0

Mechanical-front-wheel-drive	
Curb turning radius with brakes	11 ft. 5 in. (3.48 m)
Without brakes	13 ft. 6 in. (4.11 m)
Bucket clearance circle with brakes	29 ft. 7 in. (9.02 m)
Without brakes	33 ft. 8 in. (10.26 m)
Steering wheel turns, stop to stop	2.5
Axle oscillation, stop to stop, both axles	22 degrees

Axle ratings (SAE J43)	
Front	22,360 lb. (10,140 kg)
Rear	15,530 lb. (7,045 kg)

HYDRAULIC SYSTEM

System	pressure compensated load sensing (PCLS)
Pressure, main relief	3,625 psi (25,000 kPa)
Pump	axial piston
Flow @ 2,200 rpm	42 gpm (159 L/min.)
Filter, return oil	10-micron, spin-on vertical replaceable element

CYLINDERS	410E		
	Bore	Stroke	Rod
Loader boom (2)	3.15 in. (80 mm)	31.1 in. (790 mm)	1.97 in. (50 mm)
Loader bucket (1)	3.54 in. (90 mm)	29.3 in. (744 mm)	1.97 in. (50 mm)
Backhoe boom (1)	4.92 in. (125 mm)	35.3 in. (897 mm)	2.48 in. (63 mm)
Backhoe crowd (1)	4.53 in. (115 mm)	27.7 in. (703 mm)	2.48 in. (63 mm)
Backhoe bucket (1)	3.94 in. (100 mm)	31.9 in. (810 mm)	2.48 in. (63 mm)
Backhoe swing (2)	3.54 in. (90 mm)	10.9 in. (278 mm)	1.97 in. (50 mm)
Backhoe extendable dipperstick (1)	2.76 in. (70 mm)	47.8 in. (1214 mm)	1.77 in. (45 mm)
Backhoe stabilizer (2)	3.94 in. (100 mm)	17.9 in. (450 mm)	1.97 in. (50 mm)
Steering (1) non-powered axle	2.20 in. (56 mm)	9.49 in. (241 mm)	0.98 in. (25 mm)
Steering (1) MFWD	2.56 in. (65 mm)	8.27 in. (210 mm)	1.42 in. (36 mm)

TIRES	Rear		Front	
	With non-powered front axle	19.5L-24, 10 PR R4 21L-24, 10 PR R4	11L-16, 12 PR F3 14.5/75-16.1, 10 PR F3	19.5L-24, 10 PR R4 21L-24, 10 PR R4

SAE OPERATING WEIGHTS	
Standard	15,000 lb. (6804 kg)
Cab adds	580 lb. (263 kg)
Mechanical-front-wheel-drive with tires adds	325 lb. (147 kg)
Extendable dipperstick excluding required counterweight adds	538 lb. (289 kg)
Optional 400-lb. counterweight adds	400 lb. (181 kg)
Optional 650-lb. counterweight adds	650 lb. (295 kg)
Optional 250-lb. bolt-on counterweight adds	250 lb. (113 kg)
Backhoe bucket coupler adds	130 lb. (59 kg)

See backhoe and loader performance data for bucket weights.

LOADER BUCKETS	Width	Heaped Capacity		Weight
		1.25 cu. yd. (0.96 m ³)	1.30 cu. yd. (1.00 m ³)	
Heavy-duty long lip	86 in. (2180 mm)	1.25 cu. yd. (0.96 m ³)	1.30 cu. yd. (1.00 m ³)	875 lb. (397 kg)
	92 in. (2340 mm)	1.30 cu. yd. (1.00 m ³)	1.50 cu. yd. (1.15 m ³)	1,050 lb. (476 kg)
	92 in. (2340 mm)	1.50 cu. yd. (1.15 m ³)	1.25 cu. yd. (0.96 m ³)	1,190 lb. (540 kg)
Multipurpose	92 in. (2340 mm)	1.25 cu. yd. (0.96 m ³)		1,550 lb. (703 kg)

Auxiliary cutting edge and skid shoes are standard on all buckets.

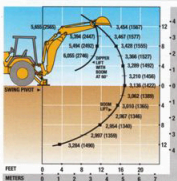
BACKHOE PERFORMANCE	With Standard Backhoe*	With Extendable Dipperstick*	
		Retracted	Extended
Digging force, bucket cylinder	14,801 lb. (65.8 kN)	15,010 lb. (66.7 kN)	15,010 lb. (66.7 kN)
Digging force, crowd cylinder	8,741 lb. (38.9 kN)	8,446 lb. (37.6 kN)	5,980 lb. (26.6 kN)
Swing arc	180 degrees	180 degrees	180 degrees
Operator control	two levers	right foot treadle	right foot treadle
Bucket rotation	190 degrees	190 degrees	190 degrees
Stabilizer angle rearward	18 degrees	18 degrees	18 degrees
Leveling angle	14 degrees	14 degrees	14 degrees

*Backhoe specifications are with 24 in. x 7.5 cu. ft. (610 mm x 0.21 m³) bucket.

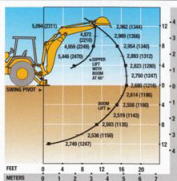
BACKHOE BUCKETS	Width	Capacity		Weight
		7.5 cu. ft. (0.21 m ³)	10.0 cu. ft. (0.28 m ³)	
Standard duty	24 in. (610 mm)	7.5 cu. ft. (0.21 m ³)	10.0 cu. ft. (0.28 m ³)	350 lb. (159 kg)
	12 in. (305 mm)	3.3 cu. ft. (0.09 m ³)	5.1 cu. ft. (0.14 m ³)	295 lb. (134 kg)
	18 in. (457 mm)	5.1 cu. ft. (0.14 m ³)	7.5 cu. ft. (0.21 m ³)	335 lb. (152 kg)
	24 in. (610 mm)	7.5 cu. ft. (0.21 m ³)	10.0 cu. ft. (0.28 m ³)	400 lb. (181 kg)
	24 in. (610 mm)	8.8 cu. ft. (0.25 m ³)	12.5 cu. ft. (0.35 m ³)	420 lb. (191 kg)
	30 in. (762 mm)	10.0 cu. ft. (0.28 m ³)	15.0 cu. ft. (0.42 m ³)	445 lb. (202 kg)
Extra heavy duty	36 in. (914 mm)	12.5 cu. ft. (0.35 m ³)	15.0 cu. ft. (0.42 m ³)	510 lb. (231 kg)
	18 in. (457 mm)	5.1 cu. ft. (0.14 m ³)	7.5 cu. ft. (0.21 m ³)	362 lb. (164 kg)
	24 in. (610 mm)	7.5 cu. ft. (0.21 m ³)	10.0 cu. ft. (0.28 m ³)	425 lb. (193 kg)
	24 in. (610 mm)	8.8 cu. ft. (0.25 m ³)	12.5 cu. ft. (0.35 m ³)	455 lb. (206 kg)
	30 in. (762 mm)	10.0 cu. ft. (0.28 m ³)	15.0 cu. ft. (0.42 m ³)	475 lb. (215 kg)
	36 in. (914 mm)	12.5 cu. ft. (0.35 m ³)	15.0 cu. ft. (0.42 m ³)	510 lb. (231 kg)

*Lift capacities are over-end values in lb. (kg) according to SAE J31. Figures listed are 87% of the maximum lift force available. Base vehicle includes counterweight.

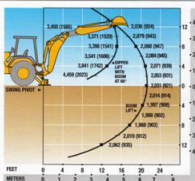
**410E BACKHOE WITH
STANDARD DIPPERSTICK**



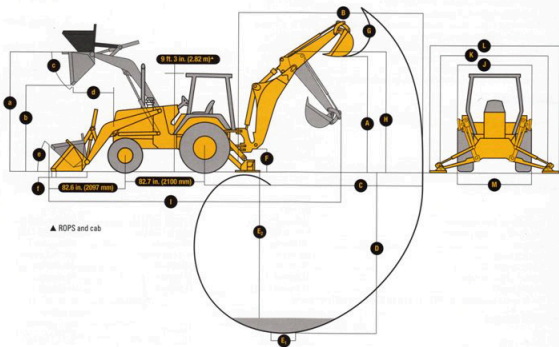
**410E BACKHOE WITH 4 FT. (1.22 M)
EXTENDABLE DIPPERSTICK, RETRACTED**



**410E BACKHOE WITH 4 FT. (1.22 M)
EXTENDABLE DIPPERSTICK, EXTENDED**



DIMENSIONS (SEE PAGE 16.)



BACKHOE

410E

	With Standard Backhoe*	With Extendable Dipperstick* Retracted	Extended
A Loading height, truck loading position.....	12 ft. 6 in. (3.81 m)	12 ft. 8 in. (3.86 m)	15 ft. 6 in. (4.72 m)
B Reach from center of swing mast.....	19 ft. 8 in. (5.99 m)	19 ft. 11 in. (6.07 m)	23 ft. 8 in. (7.21 m)
C Reach from center of rear axle.....	23 ft. 4 in. (7.11 m)	23 ft. 7 in. (7.19 m)	27 ft. 4 in. (8.33 m)
D Maximum digging depth.....	15 ft. 10 in. (4.83 m)	16 ft. 1 in. (4.90 m)	20 ft. (6.10 m)
E Digging depth (SAE):			
(1) 2-ft. (610 mm) flat bottom.....	15 ft. 8 in. (4.78 m)	15 ft. 11 in. (4.85 m)	19 ft. 11 in. (6.07 m)
(2) 8-ft. (2440 mm) flat bottom.....	14 ft. 7 in. (4.45 m)	14 ft. 11 in. (4.55 m)	19 ft. 1 in. (5.82 m)
F Ground clearance, minimum.....	14 in. (356 mm)	14 in. (356 mm)	14 in. (356 mm)
G Bucket rotation.....	190 degrees	190 degrees	190 degrees
H Transport height.....	12 ft. 11 in. (3.94 m)	12 ft. 10 in. (3.91 m)	12 ft. 10 in. (3.91 m)
I Overall length, transport.....	23 ft. 11 in. (7.29 m)	23 ft. 11 in. (7.29 m)	23 ft. 11 in. (7.29 m)
J Stabilizer width – transport with ROPS.....	7 ft. 2 in. (2.18 m)	7 ft. 2 in. (2.18 m)	7 ft. 2 in. (2.18 m)
K Stabilizer spread – operating.....	10 ft. 2 in. (3.10 m)	10 ft. 2 in. (3.10 m)	10 ft. 2 in. (3.10 m)
L Stabilizer overall width – operating.....	11 ft. 7 in. (3.53 m)	11 ft. 7 in. (3.53 m)	11 ft. 7 in. (3.53 m)
M Width over tires.....	86 in. (2.18 m)	86 in. (2.18 m)	86 in. (2.18 m)

*Backhoe specifications are with 24 in. x 7.5 cu. ft. (610 mm x 0.21 m³) bucket.

LOADER PERFORMANCE WITH BUCKET OPTIONS

	1.25 cu. yd. (0.96 m ³) Heavy-Duty Long-Lip	1.30 cu. yd. (1.00 m ³) Heavy-Duty Long-Lip	1.50 cu. yd. (1.15 m ³) Heavy-Duty Long-Lip	1.25 cu. yd. (0.96 m ³) Multipurpose
Operator control.....	single lever	single lever	single lever	dual lever
Breakout force.....	10,210 lb. (45.4 kN)	10,300 lb. (45.8 kN)	10,170 lb. (45.2 kN)	9,700 lb. (43.1 kN)
Lifting capacity, full height.....	7,340 lb. (3332 kg)	7,200 lb. (3266 kg)	7,070 lb. (3207 kg)	6,700 lb. (3039 kg)
A Height to bucket hinge pin, maximum.....	11 ft. (3.35 m)	11 ft. (3.35 m)	11 ft. (3.35 m)	11 ft. (3.35 m)
B Dump clearance, bucket at 45 degrees.....	8 ft. 4 in. (2.49 m)	8 ft. 10 in. (2.69 m)	8 ft. 9 in. (2.67 m)	8 ft. 8 in. (2.64 m)
C Bucket dump angle, maximum.....	45 degrees	45 degrees	45 degrees	45 degrees
D Reach at full height, bucket at 45 degrees.....	35.5 in. (902 mm)	30.0 in. (762 mm)	31.0 in. (787 mm)	32.2 in. (818 mm)
E Rollback angle at ground level.....	40 degrees	40 degrees	40 degrees	40 degrees
F Digging depth below ground, bucket level.....	4.2 in. (107 mm)	6.7 in. (170 mm)	6.2 in. (157 mm)	5.9 in. (150 mm)
Raising time to full height.....	4.8 sec.	4.8 sec.	4.8 sec.	4.8 sec.
Bucket dump time.....	1.4 sec.	1.4 sec.	1.4 sec.	1.4 sec.
Bucket lowering time (power down).....	2.3 sec.	2.3 sec.	2.3 sec.	2.3 sec.

LIFT CAPACITY WITH QUICK COUPLER/FORKS

A Maximum height.....	5,038 lb. (2287 kg)
B Maximum reach.....	7,462 lb. (3388 kg)
C At ground line.....	9,853 lb. (4473 kg)
D Below ground line.....	4.4 in. (112.7 mm) to bottom of tire / 2.7 in. (68.3 mm) to top of tire



	410E	410E	410E
ENGINE			
John Deere Model 4045T - 45 liter, 90 SAE net hp turbo-charged, isolation mounted	●	●	●
Vertical spin-on engine oil filter	●	●	●
Spin-on John Deere fuel filter with water separator	●	●	●
Oil-to-water engine oil cooler	●	●	●
Antifreeze, -34°F (-37°C)	●	●	●
Coolant recovery tank	●	●	●
Serpentine belt with automatic belt tensioner	●	●	●
Sucker-type cooling fan	●	●	●
Enclosed safety fan guard	●	●	●
High ambient temperature engine cooling	●	●	●
Dual element dry-type air cleaner	●	●	●
Muffler, underhood with curved-end exhaust stack	●	●	●
Chrome exhaust extension	●	●	●
Electric ether starting aid	●	●	●
Engine coolant heater, 1,000 watts	●	●	●
POWER TRAIN			
PowerShift transmission	●	●	●
Torque converter with electrically actuated twist grip	●	●	●
F-R-N in 1st through 4th gears	●	●	●
Transmission with powershift reverser and torque converter	●	●	●
Fully synchronized four forward, four reverse speeds / Isolation mounted to mainframe	●	●	●
Transmission oil cooler	●	●	●
Vertical spin-on transmission filter	●	●	●
Electric forward-neutral-reverse control lever with neutral safety switch interlock	●	●	●
Electric clutch cutoff on gearshift and loader levers	●	●	●
Differential lock, electric foot-actuated	●	●	●
Planetary final drives	●	●	●
Hydraulic service brakes	●	●	●
Inboard, wet multi-disc, self adjusting and self equalizing / Conform to SAE J1473	●	●	●
Parking/emergency brake with electric switch control	●	●	●
Spring applied, hydraulically released wet multi-disc / Independent of service brakes / Conforms to SAE J1473	●	●	●
Hydraulic power steering with emergency manual mode	●	●	●
Non-powered front axle	●	●	●
Mechanical front wheel-drive with limited slip differential	●	●	●
Electric on/off control / Drive-shaft guard / Sealed axle	●	●	●
Tires	●	●	●
11L-16 F3 front tires	●	●	●
14.5/75-16.1 F3 front tires	●	●	●
12.5/80-18 traction front tires	●	●	●
19.5L-24 R4 rear tires	●	●	●
21L-24 R4 rear tires	●	●	●
Rear wheel spacers for use with chains	●	●	●
BACKHOE			
Backhoe with standard dipperstick, 15 ft. 10 in. digging depth	●	●	●
Backhoe controls	●	●	●
Two-lever (Deere) controls	●	●	●
Three-lever (Case) controls	●	●	●
Four-lever (Ford) controls	●	●	●
SAE excavator two-lever controls	●	●	●
Backhoe transport lock lever	●	●	●
Swing lock pin stored in operator's station	●	●	●
Stabilizer valve with two-direction anti-drift valves	●	●	●
Pivoting stabilizers	●	●	●
With dirt pads	●	●	●
With reversible pads	●	●	●
Stabilizer cylinder guards	●	●	●
Backhoe buckets	●	●	●
Less bucket, with bucket pins	●	●	●
Standard duty with lift loops	●	●	●
Heavy duty with lift loops	●	●	●
Severe duty with lift loops	●	●	●
Backhoe bucket coupler for "C" and "D" series John Deere buckets, Case buckets, and Cat buckets	●	●	●
Extendable dipperstick, 4 ft. extension	●	●	●
Auxiliary backhoe valve for swingers, thumbs, etc.	●	●	●
Auxiliary backhoe valve for hammers, compactors	●	●	●
Auxiliary backhoe plumbing for hammers, compactors	●	●	●
SAE controlled load lowering device valves	●	●	●
LOADER			
Hydraulic self leveling	●	●	●
Return-to-dig feature	●	●	●
Single-lever control with electric clutch cutoff switch	●	●	●
Bucket-level indicator	●	●	●
Loader boom service lock	●	●	●
Auxiliary loader hydraulics with two-lever control	●	●	●
Loader front coupler	●	●	●
Loader buckets	●	●	●
Less bucket, with bucket pins	●	●	●
Heavy-duty buckets with bolt-on cutting edge, skid plates, and lift loops	●	●	●
Multipurpose bucket with bolt-on cutting edge, skid plates, and lift loops	●	●	●
HYDRAULIC SYSTEM			
42 gpm (159 L/min) axial piston pump, PCLS system	●	●	●
Independent hydraulic reservoir	●	●	●
Hydraulic oil cooler	●	●	●
"O"-ring face seal connectors	●	●	●
10-micron vertical spin-on filter	●	●	●
ELECTRICAL			
12-volt system	●	●	●
65-amp alternator	●	●	●
Single battery with 150-min. reserve capacity and 750 CCA	●	●	●
Dual batteries with 300-min. reserve capacity and 1,500 CCA	●	●	●
Positive terminal battery cover	●	●	●
Blade-type multi-fused circuits	●	●	●
By-pass start safety cover on starter	●	●	●
LIGHTS			
Two front halogen driving/work lights, 32,500 candle-power each	●	●	●
Two additional front halogen work lights, 32,500 candle-power each	●	●	●
Two rear halogen work lights, 32,500 candle-power each	●	●	●
Two front and two rear turn signal/flashers	●	●	●
Two rear stop and tail	●	●	●
Two rear reflectors	●	●	●
Rotating beacon	●	●	●
OPERATOR'S STATION			
Modular-design ROPS/FOPS canopy with molded roof	●	●	●
Isolation mounted / Conforms to SAE J1040	●	●	●
Left and right front access	●	●	●
Sip-resistant steps and ergonomically located handholds	●	●	●
Molded floor mat	●	●	●
Headliner	●	●	●
Cost hook	●	●	●
Built-in beverage and Thermos® bottle holders	●	●	●
Built-in Operator's Manual storage compartment with manual	●	●	●
Interior rearview mirror	●	●	●
Outside rearview mirrors	●	●	●
Hand throttle with fuel economy setting at 2,100 rpm	●	●	●
Suspended foot throttle	●	●	●
Tilt steering	●	●	●
Horn	●	●	●
Key start switch with electric fuel shutoff	●	●	●
Tachometer/hourmeter, illuminated electric	●	●	●
Fuel gauge, illuminated electric	●	●	●
Gauge package, illuminated electric	●	●	●
Engine coolant temperature / Transmission oil temperature / Alternator volts / Fuel gauge	●	●	●
Monitor system with audible and visual warning	●	●	●
Engine air filter restriction indicator / Alternator indicator / Engine coolant temperature indicator with audible warning / Engine oil pressure indicator with audible warning / Hydraulic filter restriction indicator / Torque converter oil temperature indicator / Parking brake on/off indicator with audible warning / Seat belt indicator / Mechanical front-wheel-drive on/off indicator / Beacon on/off indicator / Hydraulic oil temperature indicator	●	●	●
Seats and seat belts	●	●	●
Non-suspension vinyl swivel seat without armrests	●	●	●
Suspension vinyl swivel seat with armrests and lumbar support	●	●	●
Suspension fabric swivel seat with armrests and lumbar support	●	●	●
Air suspension vinyl swivel seat with armrests and lumbar support	●	●	●
Air suspension fabric swivel seat with armrests and lumbar support	●	●	●
2-in. seat belt with retractors	●	●	●
3-in. seat belt with retractors	●	●	●
Cab	●	●	●
Headliner	●	●	●
Dome light	●	●	●
Left cab door	●	●	●
Right cab door	●	●	●
Tinted safety glass	●	●	●
Two front and one rear windshield wipers	●	●	●
Front windshield washer	●	●	●
Fresh air intake heater/defroster/pressurizer	●	●	●
40,000 Btu/hr. (11.7 kW) heater	●	●	●
Air conditioning	●	●	●
26,000 Btu/hr. (7.6 kW) output / CFC-free R134a refrigerant	●	●	●
65-amp alternator	●	●	●
95-amp alternator	●	●	●
AM/FM/weatherband radio	●	●	●
Ride control	●	●	●
OVERALL VEHICLE			
One-piece unitized construction mainframe	●	●	●
Vehicle sideworks, two front and one rear	●	●	●
Remote grease bank for front axle	●	●	●
Rigid mounted front bumper	●	●	●
Front counterweights	●	●	●
400 lb. (181 kg)	●	●	●
650 lb. (295 kg)	●	●	●
800 lb. (408 kg)	●	●	●
1,150 lb. (522 kg)	●	●	●
1,400 lb. (635 kg)	●	●	●
Fuel tank, 26 gal. (136 L), ground level fueling	●	●	●
Engine sidehatches with sliding service access door	●	●	●
Front grille screen	●	●	●
Vandal protection for instrument panel, engine access doors, and fuel tank	●	●	●
Reverse warning alarm	●	●	●
Switchable to 97 dBA or 111 dBA (A)	●	●	●
Dent-resistant rear fenders	●	●	●
Rear fender extensions	●	●	●
Front fenders*	●	●	●
SMV emblem	●	●	●
Rental decal kit	●	●	●
Special color paint*	●	●	●
Quarter cab*	●	●	●

KEY: ● Standard equipment ■ Optional or special equipment

*See your John Deere dealer for further information.



Net engine power is with standard equipment including air cleaner, exhaust system, alternator, and cooling fan, at standard conditions per SAE J1349 and DIN 79 022, using No. 2-D fuel at 35.0 PSI gravity. No derating is required up to 10,000 feet (3050 m). Gross power is without cooling fan.

Specifications and design subject to change without notice. Wherever applicable, specifications are in accordance with SAE standards. Except where otherwise noted, these specifications are based on a unit with 19.5L-24, 10 PR R4 rear tires, 11L-16 F3 front tires, 1.30 cu. yd. (1.00 m³) loader bucket, and 24 in. x 7.5 cu. ft. (810 mm x 0.21 m³) backhoe bucket.

