



755B

LOADER



755B
JOHN DEERE

**SAE Net
Horsepower**

140 hp
(104 kW)

**Drive
System**

Dual-path
hydrostatic

**Operating
Weight SAE**

36,150 lb.
(16,400 kg)

Model shown may include options

ENGINE

John Deere engineered and manufactured 6-cylinder diesel engine. Replaceable wet-type cylinder liners help ensure superior heat dissipation, longer engine life. High-strength alloy heads include replaceable valve seat inserts. The forged steel, 7-main bearing crankshaft is statically and dynamically balanced for smooth operation. Cast aluminum pistons reduce rod bearing loads and provide vital heat transfer: pistons are sprayed with cooling oil for longer life.

| | |
|---------------------------------|--|
| Engine: John Deere 6068T | 140 SAE net hp (104 kW) |
| Rated power at 2100 rpm | 148 SAE gross hp (110 kW) |
| Turbocharger | standard |
| Cylinders | 6 |
| Displacement | 414 cu. in. (6,785 L) |
| Fuel consumption, typical | 3.5 to 5.0 gal./hr. (13.5 to 19 L/h) |
| Maximum net torque at 1300 rpm | 420 lb.-ft. (570 Nm) |
| Lubrication | pressure system with full-flow filters |
| Air cleaner | dry type with restriction indicator |
| Electrical system | 24-volt with 40-amp alternator |
| Cooling fan | blower |

TRANSMISSION

Automatic, dual-path, hydrostatic drive provides infinitely variable speeds to 6.7 mph (10.8 km/h). The transmission's load sensing feature automatically adjusts speed and power to match changing load conditions. Each track is powered by a variable displacement piston pump and motor combination. The speed and direction of each track can be individually controlled.

TRAVEL SPEEDS

Forward and reverseinfinite to 6.7 mph (0 to 10.8 km/h)

FINAL DRIVES

Double-reduction, planetary final drives transfer torque loads over three gear sets instead of one. The final drives are mounted independently of the track frames to isolate them from shock loads for increased life and reliability.

BRAKES

Hydrostatic (dynamic) braking stops the crawler when the transmission control lever is moved to neutral. Wet, multi-disk parking brakes are automatically applied when the engine stops, when the neutral lever is placed in start position, or can be operator-applied by engaging the center brake pedal.

STEERING

Steering is done hydrostatically by varying track speed and/or direction. Depressing a pedal slows or varies the speed of the track, all the way to a stop if desired. Continuing to depress the pedal will cause the track to reverse for counterrotation. Hydrostatic steering eliminates the need for steering clutches and steering brakes, as well as the need for cross-steering when working on steep slopes.

HYDRAULICS

| | |
|------------------|-----------------------|
| System | open center |
| Pressure | 2500 psi (17 237 kPa) |
| Pump | gear |
| Flow at 2100 rpm | 54 gpm (204 L/min.) |

TRACKS

6-roller, 93.5-in. (2375 mm) track frame with front and rear track guides and sprocket guard. Dura-Trax™ undercarriage features deep-heat-treated, sealed and lubricated track links and through-hardened sealed and lubricated rollers for maximum wear resistance.

| | |
|---------------------------|--|
| Standard Track | |
| Two-bar grouser width | 17 in. (432 mm) |
| Track shoes, each side | 36 |
| Ground contact area | 3173 sq. in. (20 472 cm ²) |
| Ground pressure | 11.4 psi (78.6 kPa) |
| Length of track on ground | 93.5 in. (2375 mm) |
| Track gauge | 66 in. (1676 mm) |
| Carrier roller, each side | 1 |
| Adjustment | hydraulic |
| Ground clearance, minimum | 15.3 in. (389 mm) |
| Wide Track | |
| Two-bar grouser width | 21 in. (533 mm) |
| Track shoes, each side | 36 |
| Ground contact area | 3927 sq. in. (25 336 cm ²) |
| Ground pressure | 9.5 psi (65.5 kPa) |
| Length of track on ground | 93.5 in. (2375 mm) |
| Track gauge | 70 in. (1778 mm) |
| Carrier roller, each side | 1 |
| Adjustment | hydraulic |
| Ground clearance, minimum | 15.3 in. (389 mm) |

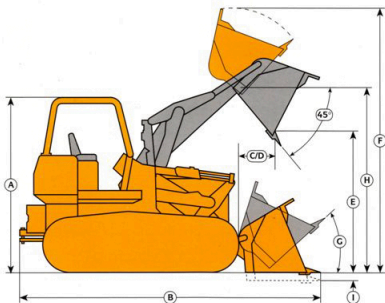
CAPACITIES

| | |
|-----------------------------|--------------------|
| Fuel tank | 73 gal. (276.3 L) |
| Cooling system | 7 gal. (26.5 L) |
| Crankcase | 18 qt. (17 L) |
| Crankcase, including filter | 20 qt. (18.9 L) |
| Splitter drive | 1.5 gal. (5.7 L) |
| Final drive each: | |
| 1st reduction | 6.25 gal. (23.6 L) |
| 2nd reduction | 3.5 gal. (13.2 L) |
| Loader hydraulic system | 37 gal. (140 L) |
| Hydrostatic drives | 35 gal. (125 L) |

OPERATING WEIGHTS

| | |
|------------------|------------------------|
| 755B (with ROPS) | SAE |
| Standard track | 36,150 lb. (16 400 kg) |
| Wide track | 37,450 lb. (17 000 kg) |

DIMENSIONS



Key:

Bucket Type

| | |
|---|------------------------------------|
| Capacity, heaped, SAE | 2.25 cu. yd. (1.7 m ³) |
| A. Overall height | 123.7 in. (3142 mm) |
| B. Overall length | 222 in. (5639 mm) |
| C. Reach at maximum height (45° discharge)..... | 47 in. (1194 mm) |
| D. Reach at 84 in. (2134 mm) clearance (45° discharge)..... | 67 in. (1702 mm) |
| E. Dump clearance, maximum height (45° discharge)..... | 112 in. (2845 mm) |
| F. Maximum operating height | 194 in. (4928 mm) |
| G. Rollback angle | |
| Concrete level..... | 38 degrees |
| Carry position..... | 45 degrees |
| H. Height to hinge pin..... | 143 in. (3632 mm) |
| I. Digging depth | 4.2 in. (107 mm) |

General Purpose

Standard

Wide-Track

Multipurpose

| | | | |
|---|-----------------------------------|---------------------------------|---------------------|
| Capacity, heaped, SAE | 2.5 cu. yd. (1.9 m ³) | 2 cu. yd. (1.5 m ³) | |
| A. Overall height | 123.7 in. (3142 mm) | 123.7 in. (3142 mm) | 123.7 in. (3142 mm) |
| B. Overall length | 222.5 in. (5652 mm) | 223 in. (5664 mm) | 223 in. (5664 mm) |
| C. Reach at maximum height (45° discharge)..... | 47.5 in. (1206 mm) | 47.4 in. (1204 mm) | 47.4 in. (1204 mm) |
| D. Reach at 84 in. (2134 mm) clearance (45° discharge)..... | 67.5 in. (1715 mm) | 65 in. (1651 mm) | 65 in. (1651 mm) |
| E. Dump clearance, maximum height (45° discharge)..... | 111.5 in. (2832 mm) | 111.6 in. (2835 mm) | 111.6 in. (2835 mm) |
| F. Maximum operating height | 195 in. (4953 mm) | 190 in. (4826 mm) | 190 in. (4826 mm) |
| G. Rollback angle | | | |
| Concrete level..... | 36 degrees | 36 degrees | 36 degrees |
| Carry position..... | 45 degrees | 45 degrees | 45 degrees |
| H. Height to hinge pin..... | 143 in. (3632 mm) | 143 in. (3632 mm) | 143 in. (3632 mm) |
| I. Digging depth | 4.2 in. (107 mm) | 4.2 in. (107 mm) | 4.2 in. (107 mm) |

755B LOADER OPERATING INFORMATION

| Bucket Type | | General Purpose | | |
|---|----------------|-----------------|------------|--------------|
| | | Standard | Wide Track | Multipurpose |
| Capacity, heaped, SAE | cu. yd. | 2.25 | 2.5 | 2.0 |
| | m ³ | 1.7 | 1.9 | 1.5 |
| Capacity, struck, SAE | cu. yd. | 1.9 | 2.1 | 1.6 |
| | m ³ | 1.5 | 1.6 | 1.2 |
| Bucket width | in. | 89.1 | 96.6 | 89.1 |
| | mm | 2263 | 2454 | 2263 |
| Bucket weight, without teeth | lb. | 2110 | 2150 | 3520 |
| | kg | 960 | 975 | 1597 |
| Breakout force, SAE | lb. | 27,500 | 27,150 | 27,000 |
| | kN | 122 | 121 | 120 |
| Tipping load, (with drawbar, four counterweights, ROPS) | lb. | 25,340 | 26,120 | 23,930 |
| | kg | 11 494 | 11 845 | 10 854 |
| Raising time | sec. | 5.86 | 5.86 | 5.86 |
| Dumping time | sec. | 1.27 | 1.27 | 1.27 |
| Lowering time | sec. | 3.23 | 3.23 | 3.23 |
| Operating weight with ROPS canopy | lb. | 36,150 | 37,450 | 37,560 |
| | kg | 16 400 | 17 000 | 17 030 |
| Operating weight with ROPS cab | lb. | 36,550 | 37,850 | 37,960 |
| | kg | 16 579 | 17 169 | 17 210 |

Adjustments to operating weights and tipping load for 2.25 cu. yd. (1.7 m³) bucket

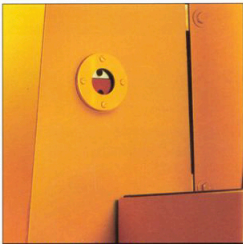
ADJUSTMENTS TO OPERATING WEIGHTS

| Add (+) or deduct (-) lb. (kg) as indicated for loader equipped with: | | Wide Track | | |
|---|-----|------------|------------------|--------------|
| | | Wide Track | Operating Weight | Tipping Load |
| Cab | lb. | + 400 | + 400 | + 440 |
| | kg | + 181 | + 181 | + 200 |
| Bucket teeth, bolt-on | lb. | + 338 | + 296 | - 385 |
| | kg | + 153 | + 134 | - 175 |
| Bucket teeth, weld-on, flush mount | lb. | + 206 | + 180 | - 234 |
| | kg | + 93 | + 82 | - 106 |
| Air conditioner | lb. | + 109 | + 109 | + 30 |
| | kg | + 49 | + 49 | + 14 |
| Ripper (without drawbar and four counterweights) | lb. | - 106 | - 106 | + 200 |
| | kg | - 48 | - 48 | + 91 |
| Counterweight (each) | lb. | ± 500 | ± 500 | ± 865 |
| | kg | ± 227 | ± 227 | ± 392 |



OPERATOR'S STATION

The 755B features a roomy, walk-through platform design. Controls are logically located, with transmission and throttle levers on your left and hydraulic levers on the right. Steering is done with easy-to-push pedals. Easy-to-read, color-coded, non-glare gauges are placed well within your forward field of vision.



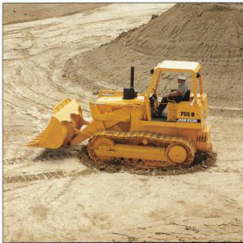
EASY SERVICING

Convenient, exterior-mounted sight gauges provide a quick reading of hydrostatic and hydraulic fluid levels. The engine fluid and air filter restriction indicators are visible through doors on top of the hood. The dual-state, dry-type aspirated air cleaner nearly triples filter life and eliminates the need for daily servicing.



ISOLATED FINAL DRIVES

The double-reduction planetary final drives transfer torque loads over three gear sets instead of one. They're mounted independently of the track frames. This keeps shock loads away from the final drives and other vital drivetrain components. Modular design makes servicing easy.



COUNTERROTATION

With the 755B's dual-path hydrostatic design, the operator can counterrotate the tracks for space-saving spot turns. This boost in productivity is especially useful on small jobsites and in close quarters. There is less need to operate the crawler in reverse, and therefore more opportunity for extended life of the undercarriage.

ADDITIONAL STANDARD EQUIPMENT

Engine:

Air cleaner, dual-stage aspirated type
Air cleaner restriction indicator
Precleaner
Fan guards
Engine coolant -34°F (-37°C)
Coolant recovery tank
Blower fan
Trash resistant radiator
Oil to water engine oil cooler

Power Train:

Dual-path hydrostatic transmission

Less clutch disconnect
Transmission neutral lock with starter safety switch
Transmission oil cooler

Hydraulics:

Two-spool hydraulic system
"O" ring face seal connectors
Return to dig

Electrical System:

Master electrical disconnect switch
Horn
Winch drive
Reverse warning alarm

Operator's Station:

Canopy (ROPS) with seat belt
Adjustable suspension seat
Adjustable armrests
Push button starting
Key switch
Hourmeter
Voltmeter
Interior-mounted rearview mirror

Overall Vehicle:

Boom safety lock pin
Heavy-duty bottom guards
Perforated engine side shields
Less bucket

Front idler shields
Heavy-duty, hinged grille plate
Lockable toolbox
Muffler, self-draining, eliminating external rain cap
Tilt cylinder hose protection
Vandal protection

Tracks:

Dura-Trax sealed and lubricated chain
17-in. (432 mm) grouser shoes

OPTIONAL OR SPECIAL EQUIPMENT WITH WEIGHTS

(Add these weights to SAE standard equipment operating weights to obtain total operating weights.)

| | lb. | kg | | lb. | kg |
|---|-----|-----|--|------|------|
| Batteries (two 12-volt) cold-cranking capacity @ 0°F (-18°C) 925 amps, reserve capacity 180 min. each | 18 | 8 | Selector valve and lines to rear for ripper and MP bucket | 10 | 5 |
| Bucket teeth, bolt-on | 296 | 134 | Lights, two front, one rear, halogen | 7 | 3 |
| Cab with pressurizer, heater and 42-amp alternator | 400 | 182 | Oil sampling kit | 2 | 1 |
| Air conditioner | 109 | 49 | Pedal extensions | 12 | 5 |
| Windshield wiper | 3 | 1 | Protection items: | | |
| Cold weather starting aid | 2 | 1 | Brush screens, heavy-duty, third post-type | 130 | 59 |
| Disconnect clutch | 20 | 9 | Brush screens, regular-duty | 72 | 33 |
| Drawbar | 198 | 90 | Limb risers and overhead exhaust | 265 | 120 |
| Engine coolant heater | 2 | 1 | Rear screen | 50 | 23 |
| Fan, reversible | 38 | 17 | Tank protection | 650 | 295 |
| Fire extinguisher | 6 | 3 | Radiator sand shield | 25 | 11 |
| Hydraulics: | | | Ripper, parallelogram type | 2400 | 1089 |
| Lines for front-mounted equipment | 6 | 3 | Rock guard, center-section | 178 | 81 |
| Lines for rear-mounted equipment | 4 | 2 | Tracks: | | |
| | | | Dura-Trax sealed and lubricated chain with split master link and 21-in. (533 mm) two-bar grouser shoes | 0 | 0 |

THE JDAdvantEDGE

JDAdvantEdge is a wealth of support programs, parts systems and dealer resources, all designed to give you the edge. This package of special benefits is a major reason why John Deere offers the "best value" for your equipment dollar.

Best parts support - Twelve regional parts depots in North America and others around the world put support near your job no matter where in the world it is.

A computerized FLASH™ parts locating system linking these depots to dealerships can find out-of-stock parts in a hurry and get them into your hands fast. Usually within 24 hours.

Best service backup - Dealer service technicians are regularly schooled, at our modern facility in Davenport, Iowa, or by professionals in the field, to diagnose quickly and repair efficiently.

If they're stumped, a phone call to DTAC (Dealer Technical Assistance Center) puts them in touch with a staff of pros at the factory who help them find a solution quickly.

Best dealers - Your John Deere dealer is an important contributor to the JDAdvantEdge. He or she is committed to being the best equipment supplier you can work with.

This is a dollars-and-cents commitment in parts inventory, in service facilities, in field service trucks. It's a sweat-and-blood commitment in dedicated, skilled and highly trained and motivated personnel in each and every department at the dealership.

But what sets John Deere dealers apart from all the rest is something more, a factor somewhat difficult to measure ... a caring attitude, and a sincere desire to be the best at meeting the needs of each individual customer.

John Deere Finance Plans - Whether you rent, lease or buy John Deere equipment, your dealer can explain the John Deere options available. One-stop options that let you free up operating capital, keep other lines of credit open. More solid benefits of the JDAdvantEdge.

Best protection - In addition to the new equipment warranty that meets or exceeds the competition, SECURE[®] extended coverage, an optional service product for John Deere equipment, is available for repair coverage after the warranty concludes. Full machine or power train coverage is available for a variety of time periods to meet your needs. Consult your dealer for availability and details.

Net engine power is with standard equipment including air cleaner, exhaust system, alternator, and cooling fan, at standard conditions per SAE J1549 and DIN 6270B, using No. 2-D fuel at 35 API gravity. No derating is required up to 10,000 feet (3050 m) altitude. Gross power is without cooling fan.

Specifications and design subject to change without notice. Wherever applicable, specifications are in accordance with SAE standards. Except where otherwise noted, these specifications are based on a unit with 2.25 cu. yd. (1.7 m³) bucket with teeth, rollover protective canopy, four counterweights, full fuel tank, 175-lb. (79 kg) operator and standard equipment.

